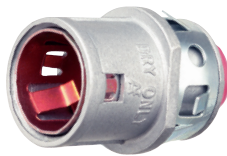
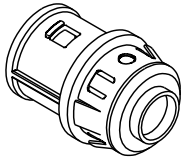




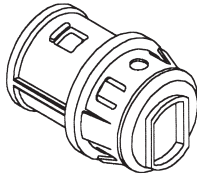
38AST



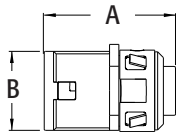
40AST



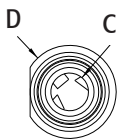
38AST



380AST



38AST



SNAP²IT® Connectors

Zinc die-cast. For AC • MCI-A • HCF steel and aluminum cable • MCI cable • Continuous corrugated aluminum • AC90

CATALOG NUMBER	UPC/DCI/NAED MFG #018997	TRADE SIZE	KO SIZE	UNIT PKG	STD PKG	DIM A	DIM B	DIM C	DIM D	CABLE RANGE
38AST*	00070	3/8	1/2	50	500	1.410	.850	.405	1.000	.405 - .612
380ST	00381	3/8	1/2	50	500	1.284	.850	.400	1.000	.405 - .612
380AST*	00382	3/8	1/2	50	500	1.410	.850	.400	1.000	.405 - .612



*Provided with insulated throat. Flexible metal conduit, CSA Listed with anti-short bushing ONLY.

WITH INSULATED THROAT AND **RED TINTED INSIDE CLIP**

CATALOG NUMBER	UPC/DCI/NAED MFG #018997	TRADE SIZE	KO SIZE	UNIT PKG	STD PKG	DIM A	DIM B	DIM C	DIM D	CABLE RANGE
40AST	00041	3/8	1/2	50	500	1.410	.850	.405	1.000	.485 - .612
400AST	40347	3/8	1/2	50	500	1.410	.850	.400	1.000	.485 - .612



Flexible metal conduit, CSA Listed with anti-short bushing ONLY. Refer to chart on page E-30 for list of cable types. See page E-33 and E-34 for MCI-A cable ranges. Concrete tight when taped.

FEATURES AND BENEFITS

- No tools needed
- Safe and fast installations
- Saves about 17 seconds per fitting!
- Competitively priced

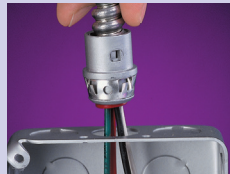
SNAP-TITE® and SNAP²IT® products have been tested and listed by UL in accordance with UL's ground fault requirements. For additional information see page Index-8.

INSTALLATION INSTRUCTIONS

SNAP²IT Connectors are EASY to Install...

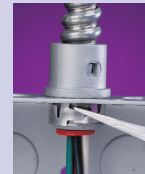


Snap fitting onto cable and twist clockwise.



Snap assembly into the box.

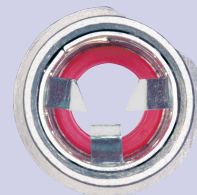
And EASY to Remove...



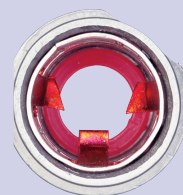
Using a screwdriver, lift the ring and twist off.

For EASIER MC/AC Installations see **3810AST** to **7510AST** on page E-2

COMPARE...



38AST



40AST

RED TINTING means 'OPEN TANG' Design!

It gives you more room inside the fitting for easy insertion of wires. The redesigned front end makes it easier than ever to snap the fitting into a box!

