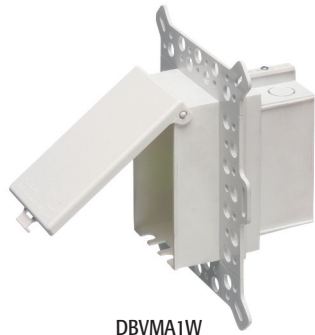


## Low Profile IN BOX™ for Foam Wall Systems

Recessed electrical box with weatherproof-in-use extra-duty cover. Adjustable to fit any foam board thickness. Non-metallic cover and base. Accepts most single gang wiring devices and uses standard indoor wall plates or a GFCI cover plate. Box and white cover are textured/ paintable. UV rated plastic for long outdoor life.



DBVMA1W

### FEATURES AND BENEFITS

- IN BOX's one-piece assembly replaces the installation of an electrical box and bubble cover assembly
- Adjustable flange depth fits any foam board thickness or custom finish in concrete block and stucco applications
- Installs in the wall, so less of it shows outside
- Adjusts for finishes from 1/4" to 2-1/2" thick – in walls, from 2-3/4" to 5" deep
- Install option: Cover is removable for easier device installation
- No gaskets required



Bug Plugs ship installed in all IN BOX styles to seal unused cord hole openings.

Scan For Video



CATALOG NUMBER	UPC/DCI/NAED MFG #018997	ORIENTATION/COVER COLOR	UNIT PKG	STD PKG	DIM A	DIM B	DIM C	DIM D MIN / MAX
DBVMA1C	77632	Vertical/Clear	1	4	9.058	7.012	5.160	.250-5.000
DBVMA1W	77634	Vertical/White	1	4	9.058	7.012	5.160	.250-5.000

Add suffix "GC" to Catalog # when ordering in Canada, for example DBVMA1CGC.

Replacement covers available on page K-17.

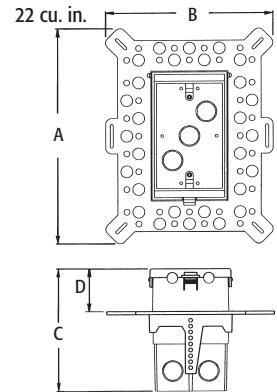
PATENTED. ADDITIONAL PATENTS PENDING.



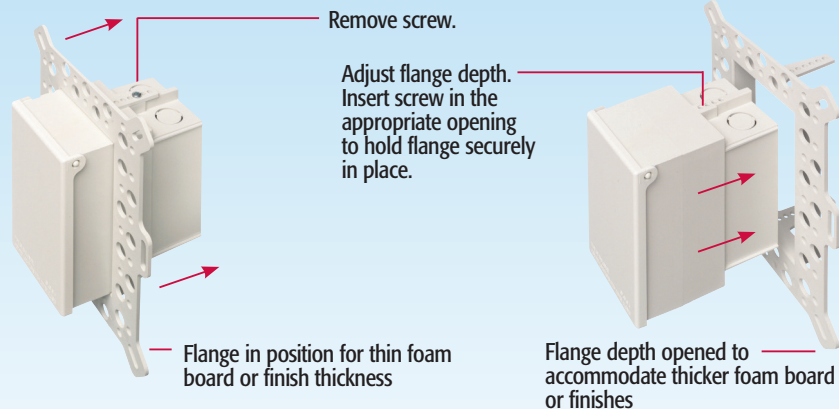
WEATHERPROOF-IN-USE  
EXTRA-DUTY

IN BOX for foam wall systems includes...

Box with weatherproof-in-use extra-duty cover, installed bug plugs, (1) standard duplex and (1) standard GFCI face plate, (4) installation screws, (1) NM cable connector, and an in-place, disposable mud cover.



### Installation Instructions



1/2" foam board



2" foam board

The flange depth adjusts to fit any foam thickness!

**Note:** Meets 2014 NEC Section 406.9; for the protection of exterior outlets which require the use of an extra-duty weatherproof while-in-use cover for all outdoor 15 or 20 AMP receptacles.