

ROOFTOPPER™ Rooftop Supports

NEW!
styles on
reverse

Reliable Support for Conduit, Cable Tray and More



*Raise conduit
12" off the
roof surface
with RTS12,
RTS1221 or
RTSE1209*



Roof Topper™ supports raise conduit or raceway 4" – or more – off the roof surface to meet the requirements of the 2011 NEC for temperature adjustment for circular conduit.

Made of 100% recycled material, the heavy-duty base sits on the roof deck without the need to attach the base to the roof surface with mechanical fasteners.

Roof Topper supports stand up to extreme roof conditions protecting and elevating your conduit or raceway above the roof deck.

Roof Topper is available in a variety of sizes and configurations. See the reverse side of this sheet for complete information.

- UV resistant
- Most ship assembled with strut and/or threaded rod installed on base
- Supports up to 2,000 lbs

Roof Topper...for sturdy, efficient, reliable support of rooftop conduit!

Arlington

1 Stauffer Industrial Park
Scranton, PA 18517

800/233.4717

Fax 570/562.0646

www.aifittings.com



Heavy-duty bases made of 100% recycled material

RTS 0911 REV0312/15M

ROOFTOPPER™ Rooftop Supports

100% Recycled Material • Stands Up to Extreme Conditions



**NEW
Styles!**



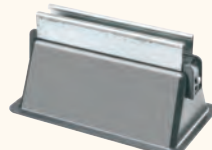
CATALOG NUMBER	UPC/DCI/NAED MFG #01 8997	DESCRIPTION	UNIT PKG	STD PKG
TWO FEET WITH STRUT				
RTS402	00916	9"w x 4-7/8"h	10	10
BASE ONLY				
RTSB405	00910	Base only 5"w x 4"h	10	10
RTSB409	00911	Base only 9"w x 4"h	10	10
RTSB1209	00912	Base only 9"w x 10-3/8"h	5	5
STRUT ATTACHED WITH END CLAMP				
RTSE405	00913	Base with strut 5"w x 5-5/8"h	10	10
RTSE409	00914	Base with strut 9"w x 5-5/8"h	10	10
RTSE1209	00915	Base with strut 9"w x 12"h	5	5

(straps not included)

"E" series ships with strut installed.



RTSE405
5"w x 5-5/8"h



RTSE409
9"w x 5-5/8"h



RTSE1209
9"w x 12"h



RTS402
9-1/2"w x 4-7/8"h



RTSB405
5"w x 4"h



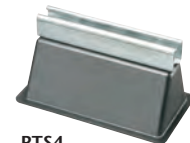
RTSB409
9"w x 4"h



Base only
"B"
series
RTSB1209
9"w x 10-3/8"h

CATALOG NUMBER	UPC/DCI/NAED MFG #01 8997	DESCRIPTION	UNIT PKG	STD PKG
RTS4	10492	9" w x 5-5/8" h	10	10
RTS12	10490	9" w x 12" h	5	5
RTS421	10493	21" w x 5-5/8" h	5	5
RTS1221	10491	21" w x 12" h	5	5

RTS4 and RTS421 include installed strut.
RTS12 and RTS1221 include strut and threaded rod (fully assembled, ready to use).
(straps not included)



RTS4
9"w x 5-5/8"h



RTS421
21"w x 5-5/8"h



RTS1221
21"w x 12"h



RTS12
9"w x 12"h

Arlington

1 Stauffer Industrial Park
Scranton, PA 18517
800/233.4717
Fax 570/562.0646
www.aifittings.com

©2011 Arlington Industries, Inc.

RTS 0911 REV0312/15M

Distributed by