

Hole Saw Box™ for Device Retrofit Construction 17.6 Cu. In. Volume

Non-metallic, 3-1/4" diameter scone/
device box for existing construction. Fits
duplex receptacles and most GFCIs.



FEATURES AND BENEFITS

- Ready to use, easy to install
- 17.6 cu. inch SUPER-SIZE capacity
- No loose parts – self-contained
- Ships with installed NM cable connector and captive fixture bracket installation screws
- Saves time – installs with a 3-1/4" standard hole saw
- Saw teeth cut a path through the drywall for the device screws and hold the device firmly in place
- Rated for light duty 3 lb. fixtures

| CATALOG NUMBER | UPC/DCI/NAED MFG #018997 | DESCRIPTION/ ATTACHMENT | UNIT PKG | STD PKG | DIM A | DIM B | DIM C | DIM D |
|----------------|--------------------------|----------------------------|----------|---------|-------|-------|-------|-------|
| FSC3227R | 12525 | Retrofit / Screws, Bracket | 25 | 25 | 4.100 | 3.220 | 2.780 | 1.540 |

PATENTED.

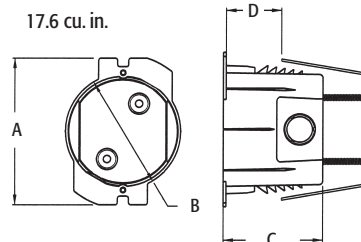


**TWO HOUR
FIRE RATING**

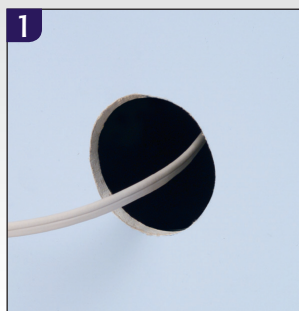


SAVES TIME!

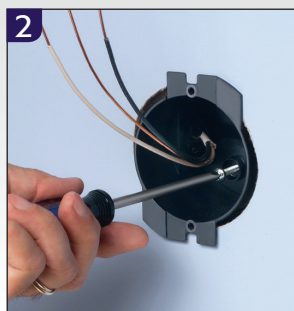
Quick, super-easy
installation with a
hole saw.



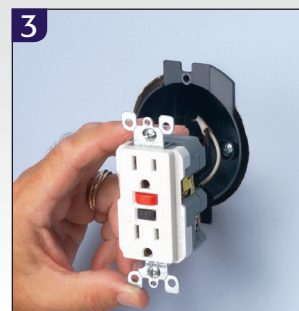
Installation Instructions



1 Cut hole with a 3-1/4" standard hole saw and pull wire. Push box through drywall. Built-in "teeth" create a path for device screws.



2 Pull NM cable through installed connector. Tighten bracket screws inside box to seat bracket securely against drywall.



3 Install device (GFCI shown) and maxi-size cover plate (not provided).