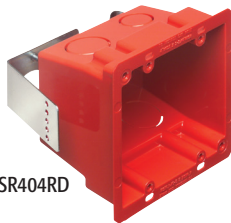


## Non-Metallic and Plated Steel 4x4 Boxes

For retrofit construction. Screw hole patterns for 4x4 and 2-gang devices. Available in non-metallic (black and red plastic) and plated steel versions.



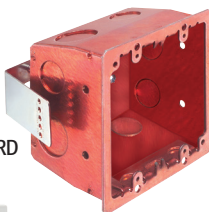
FSR404BL



FSR404RD



FSR404S



FSR404SRD



FSR404SD

### FEATURES AND BENEFITS

- Non-metallic and steel versions in red are ideal for installations of fire alarms or signaling devices
- 1/2" and 3/4" knockouts
- Spring clip holds box securely against wall when screws are tightened
- Weight rating: 6 lbs. for walls; 10 lbs. for ceilings
- Non-metallic boxes include (2) NM94 cable connectors

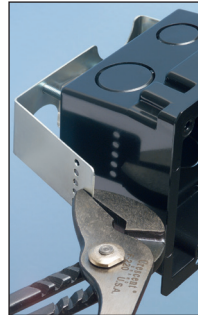
CATALOG NUMBER	UPC/DCI/NAED MFG #018997	DESCRIPTION/ ATTACHMENT	UNIT PKG	STD PKG	DIM A	DIM B	DIM C
FSR404BL	00596	Plastic 4x4 Box, Black	25	25	4.250	4.185	2.796
FSR404RD	00598	Plastic 4x4 Box, Red	25	25	4.250	4.185	2.796
FSR404S*	00597	Steel 4x4 Box, Plated	25	25	4.250	4.185	2.815
FSR404SRD*	00599	Steel 4x4 Box, Red	25	25	4.250	4.185	2.815
FSR404SD*	00600	Steel 4x4 Box Divider	25	25	3.581	0.141	2.750

\*CSA listed.

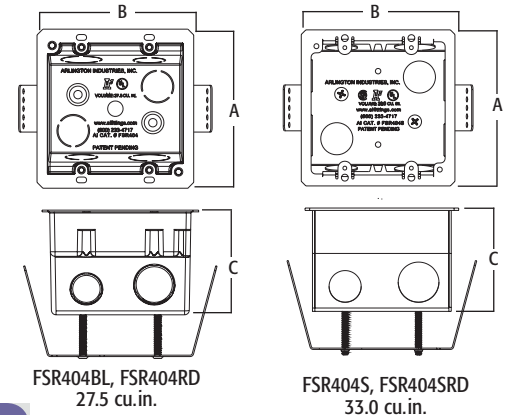
PATENTED.



E170558 LR49636

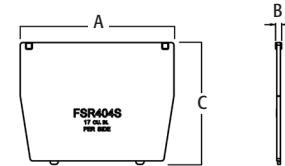


For wall thicknesses up to 1-1/4" – field modify bracket for thicknesses greater than 1-1/4".



FSR404BL, FSR404RD  
27.5 cu.in.

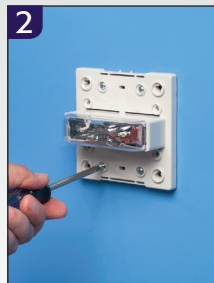
FSR404S, FSR404SRD  
33.0 cu.in.



### Typical Installation of Low Voltage Fire Alarm Box using Red 4x4 Box

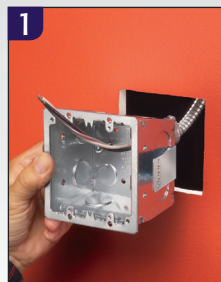


1 Determine position of device. Cut hole. Pull wire(s) through appropriate knockout (connector). Install box in opening. FSR404RD shown.

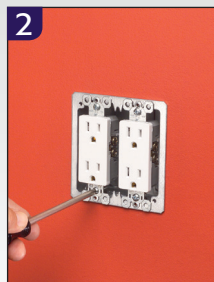


2 Install fire alarm (or other device) through the screw holes in the box.

### Typical Installation of Device using Steel or Black Plastic 4x4 Box



1 Determine position of device. Cut hole. Pull wire(s) through appropriate knockout (connector). Install box in opening. FSR404S shown.



2 Install devices through the screw holes in the box.

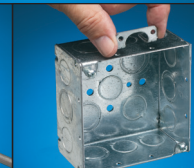
### Eliminate all this!...



Using two boxes...



Remove ears...



Position...



Drill and tap...



Add switch box support...