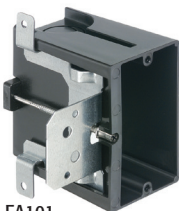
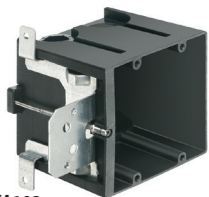


Non-Metallic Outlet Box for New Construction

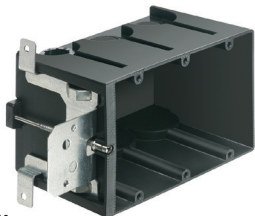
Adjustable for wall thicknesses from 1/4" to 1-1/2". It's perfect for use when the final wall thickness is unknown. Mounts directly to a wood or steel stud.



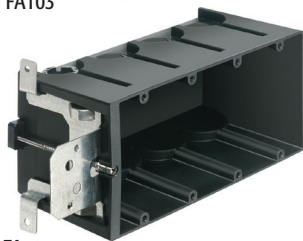
FA101



FA102



FA103



FA104



FA102D

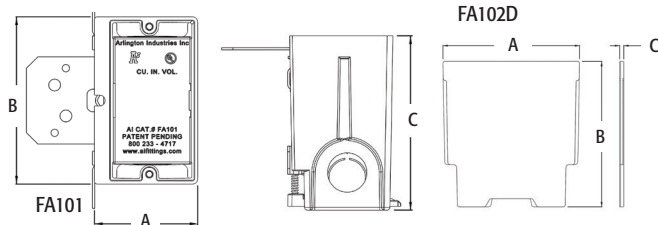
CATALOG NUMBER	UPC/DCI/NAED MFG #018997	DESCRIPTION/ CU. IN.	UNIT PKG	STD PKG	DIM A	DIM B	DIM C
FA101	04241	Single Gang / 21.0	25	25	3.720	2.299	3.875
FA102	04242	2-Gang/ 43.5	10	10	3.720	4.111	3.875
FA102D	04245	Voltage Divider	25	25	3.531	3.775	.109
FA103	04243	3-Gang / 65.0	10	10	3.720	5.923	3.875
FA104	04244	4-Gang / 87.0	10	10	3.720	7.735	3.875

Add suffix "GC" to Catalog # when ordering in Canada, for example FA101GC.

PATENTED. OTHER PATENTS PENDING.



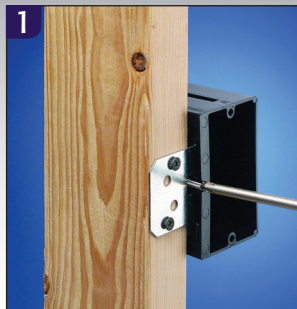
E170558



FEATURES AND BENEFITS

- Fast and easy to install
- No more set back boxes - IN/OUT BOX depth adjusts before OR after the wall finish is done
- Depth adjustment screw is accessible even after the wall finish is in place
- Secure installation - Mounts to wood or steel studs in new construction
- Complies with 2014 NEC, 314.20 for set back boxes
- FA102D low voltage separator for use with multiple gang versions

Installation Instructions



1 Attach IN/OUT BOX to wood or steel stud with captive installation screws. Feed the wires through the knockout.



2 If the box is too far forward or back, simply adjust the depth by turning the screw.

FA101
NEW CONSTRUCTION

Mounts
DIRECTLY to
WOOD or STEEL
STUD