

Black Button® Non-Metallic Push In Connectors

For NM cable. Listed for both **1 or 2** cables (together or individually).

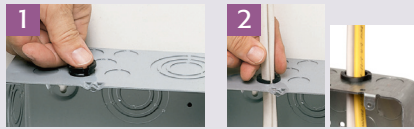
CATALOG NUMBER	UPC/DCI/NAED MFG #018997	TRADE SIZE	KO SIZE	UNIT PKG	STD PKG	DIM A	DIM B	DIM C
NM94	05488	3/8	1/2	250	1000	1.010	.492	.090
NM940	72156	3/8	1/2	100	1000	1.010	.492	.090
NM942*	04281	3/8	1/2	250	1000	.996	.540	1.000
NM95	10956	3/4	3/4	50	500	1.290	.579	.040
NM96	72158	1	1	25	250	1.648	.683	.156



*NM942 features a divider to separate cables. Refer to pages C-14 and C-15 for complete cable ranges.

INSTALLATION INSTRUCTIONS

- 1) Disconnect electrical power. Insert connector into knockout.
- 2) Push non-metallic sheathed cable into the connector to desired length.



REMOVAL

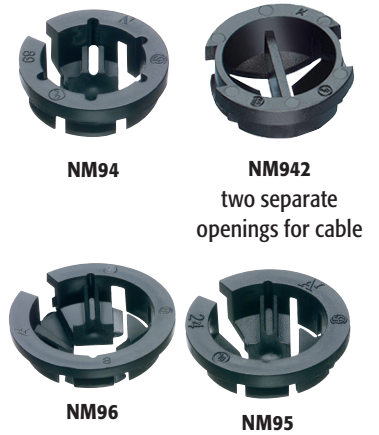
If necessary, the NM94 series may be removed with a screwdriver.

- 1) Slip screwdriver under NM connector and twist.
- 2) NM94 pops out of the knockout.



FEATURES AND BENEFITS

- Simple to remove with a twist of a screwdriver
- Lowest cost NM cable connector available today
- Holds wires securely while meeting and exceeding UL pullout tests
- Installs easily, snaps into KO using light finger pressure
- Cables insert without a struggle for a smooth installation



Works with a wide variety of NM cables including NMB-PCS and Canadas' NMD90

