

Liquid Tight, Concrete Tight Zinc Fitting for PVC Jacketed MC & Teck 90

Extra duty zinc die-cast. Liquid-tight, concrete-tight. LTMCS0 is a single fitting that fits **three** cable sizes (#14, #12, #10). LTMCS07 and LTMCS75 are larger sizes, perfect for parking decks.

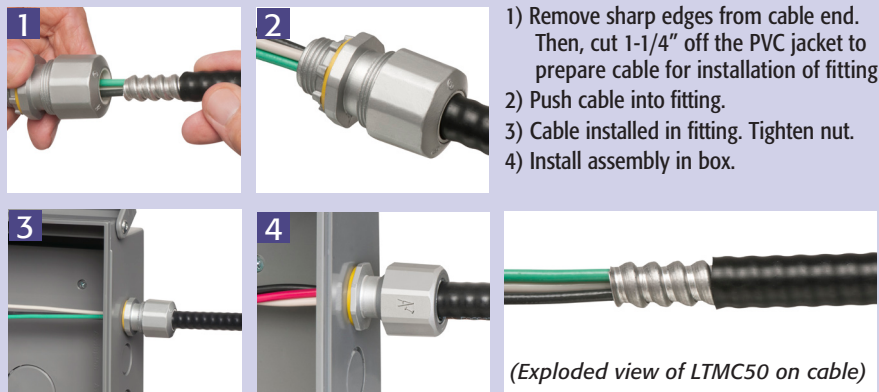
CATALOG NUMBER	UPC/DCI/NAED MFG #018997	TRADE SIZE	CABLE RANGE	UNIT PKG	STD PKG	DIM A	DIM B	DIM C
LTMCS0	04279	1/2	.415 - .565	25	100	2.221	1.310	1.300
LTMCS07	16800	1/2	.550 - .765	25	25	2.603	1.680	1.188
LTMCS75	16801	3/4	.725 - .980	25	25	2.648	1.680	1.350

 **PATENTED.**
E60812 **MADE IN USA.**

FEATURES AND BENEFITS

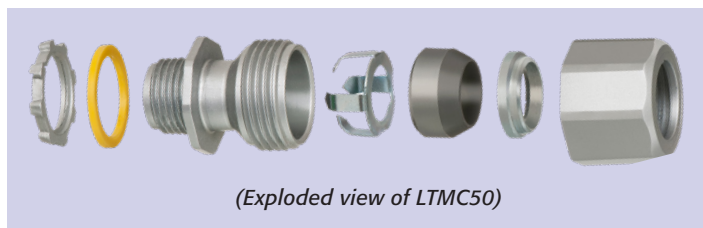
- Reduces inventory & saves cost of stocking several different fittings
- Larger sizes accommodate widest cable range: 14/2 - 4/3
- Fast and easy installation
- Ideal for parking decks

INSTALLATION INSTRUCTIONS (LTMCS0)



- 1) Remove sharp edges from cable end. Then, cut 1-1/4" off the PVC jacket to prepare cable for installation of fitting.
- 2) Push cable into fitting.
- 3) Cable installed in fitting. Tighten nut.
- 4) Install assembly in box.

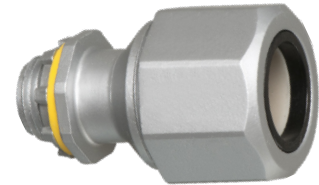
(Exploded view of LTMCS0 on cable)



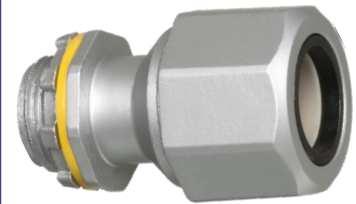
Scan For Video



LTMCS0



LTMCS07



LTMCS75

