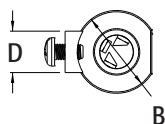
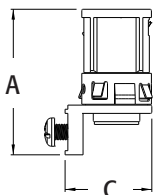




38RASTG



40RASTG



## SNAP<sup>2</sup>IT<sup>®</sup> Cable Connectors with Built In Ground for Retrofit or New Work

Zinc die-cast. For AC, MC, HCF, MC Continuous corrugated aluminum cable, MCI-A cables (steel and aluminum), AC90 ACG90 and FLEX.

CATALOG NUMBER	UPC/DCI/NAED MFG #018997	TRADE SIZE	KO SIZE	UNIT PKG	STD PKG	DIM A	DIM B	DIM C	DIM D	CABLE RANGE
38RASTG	13588	3/8	1/2	25	25	1.780	1.000	1.046	.500	.405 - .610
40RASTG	22091	3/8	1/2	25	25	1.780	1.000	1.046	.500	.480 - .610



PATENTED.  
MADE IN USA.

Red-tinted inside. **CSA Listed with anti-short bushing ONLY.** Refer to chart on page E-30 for list of cable types. See page E-33 and E-34 for MCI-A cable ranges.



- Super secure installation, no pullout!
- Fully assembled one piece design with insulated throat
- Widest total cable ranges accommodates cables from 14/2 to 10/3
- Widest variety of cables

### INSTALLATION SHOTS

