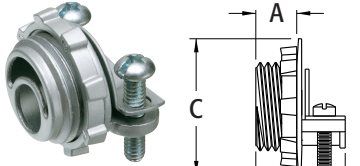


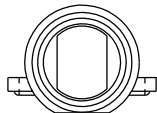
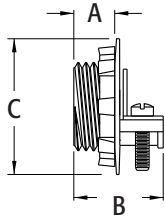
840



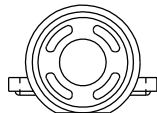
8400



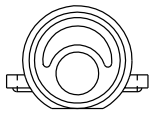
8401



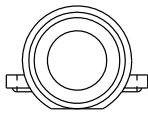
840



8400



8401



8402-8410

Cable Connectors

For NM • SE • MCI • MCIA • AC cable. For steel and aluminum jacketed cables. Zinc die-cast.

CATALOG NUMBER	UPC/DCI/NAED MFG #018997	KO SIZE	UNIT PKG	STD PKG	DIM A	DIM B	DIM C	CABLE RANGE	END STOP DIAMETER
840††	00840	1/2	100	1000	.400	.860	.876	.225-.610	.400 x .580
8400††	08400	1/2	100	1000	.400	.860	.876	.225-.610	.400
8401†	08401	1/2	100	1000	.400	.860	.876	.225-.610	.375
8402†	08402	3/4	50	500	.475	1.060	1.125	.525-.780	.620
8403*	08403	1	25	250	.540	1.184	1.500	.780-.980	.840
8404*	08404	1-1/4	10	100	.640	1.302	1.872	1.050-1.345	1.030
8405*	08405	1-1/2	10	50	.723	1.460	2.120	1.410-1.633	1.390
8407*	08407	2	10	50	.750	1.540	2.594	1.640-2.040	1.750
8408*	72166	2-1/2	10	10	.875	1.872	3.235	1.950-2.480	1.924
8409*	72168	3	5	5	.994	2.033	3.890	2.420-3.070	2.390
8410*	72170	3-1/2	5	5	.970	2.194	4.392	2.860-3.600	2.830



*Listed for MC only. UL# E123751. ‡Also for MCI-A cable. See page E-30 and E-31 for MCI-A cable ranges. Refer to chart on page E-27 for a list of cable types. Concrete tight when taped. † HFC use. For connectors that cost less and install faster, see page C-9.