

## QuickLatch™ Non-Metallic Pipe Hangers

One piece. Non-metallic. UV rated.

CATALOG NUMBER	UPC/DCI/NAED MFG #018997	RIGID SIZE*	EMT SIZE	LT SIZE	FLEX SIZE	ENT SIZE	COPPER TUBING	COPPER PIPE	STD PKG	DIM A	DIM B	DIM C
NM1000†	54615	--	--	--	--	--	--	--	100	1.563	.777	1.563
NM1900	54514	--	--	5/16	--	--	1/2	--	100	.844	.668	1.270
NM2000	54515	--	1/2	3/8	--	--	--	3/8	100	.922	.795	1.412
NM2005	54525	1/2	--	1/2	1/2	1/2	--	1/2	100	1.077	.795	1.588
NM2010	54516	--	3/4	--	--	--	3/4	--	100	1.178	.800	1.667
NM2015	54526	3/4	--	3/4	3/4	3/4	--	3/4	100	1.277	.800	1.826
NM2020	54517	--	1	--	--	--	1	--	100	1.377	.790	1.983
NM2025	54518	1	--	1	1	1	--	1	100	1.582	.830	2.180
NM2030	54528	--	1-1/4	--	--	--	1-1/4	--	100	1.700	.820	2.346
NM2040	54519	1-1/4	1-1/2	--	--	--	1-1/2	1-1/4	100	1.830	.830	2.523
NM2045	54544	1-1/2	--	1-1/2	1-1/2	--	--	1-1/2	100	2.212	.860	2.846
NM2150	54547	--	--	--	--	--	2	--	50	2.640	.910	3.100
NM2050	54520	2	2	2	2	--	2	--	50	3.020	.910	3.470
NM2060	54521	2-1/2	2-1/2	2-1/2	2-1/2	--	--	--	50	3.460	1.115	5.095
NM2070	54522	3	3	3	3	--	--	--	25	4.224	1.362	6.153
NM2080	54523	3-1/2	3-1/2	3-1/2	3-1/2	--	--	--	25	4.720	1.548	7.000
NM2090	54592	4	4	4	4	--	--	--	10	5.365	1.743	7.850

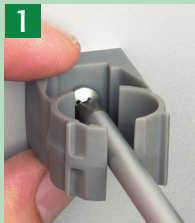
 **†PATENTED.**  
E161207 LR49636 **MADE IN USA.**

Rigid sizes also same for IMC and PVC. For additional information on QuickLatch plumbing applications, call or visit our website.

### FEATURES AND BENEFITS

- Corrosion resistant
- UV rated for outdoor application
- Listed for use in environmental air handling spaces per 2020 NEC code requirement 300.22(c)
- 2-1/2" to 4" hangers feature tabs with openings for the optional securing of a cable tie
- Mounts horizontally or vertically
- Saves 25 seconds per installation!
- Costs the same as a steel pipe hanger with bolt and nut
- Conduit snaps into place, locking automatically
- Accommodates thin wall, rigid conduit, PVC conduit, or copper

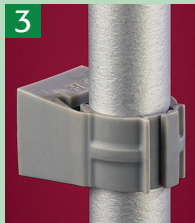
### INSTALLATION INSTRUCTIONS



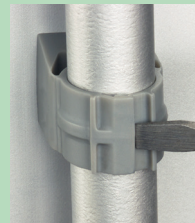
**1** Mount to wall, strut, stud, or threaded rod up to 1/4-20



**2** Press pipe down firmly into QuickLatch to lock it in place



**3** That's it!



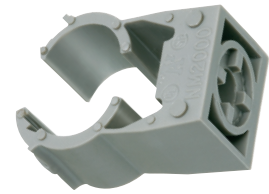
**To Remove:** Use a screwdriver to lift tab.

**QuickLATCH™**

Use it anywhere you would use a pipe hanger!



Scan For Video



NM2000



NM1000



NM2080

