

Low Profile IN BOX® with Metal Box for New Construction Stucco, Textured Surfaces, & Rigid Siding

Recessed, metallic electrical box with non-metallic, extra duty weatherproof in use cover for stucco over masonry or wood construction. Also for cementitious/fiber rigid lap siding. Accepts most single-gang wiring devices and uses standard indoor wall plates or a GFCI cover plate. Non-metallic portion and covers are UV rated plastic for long outdoor life. Compatible with DBVC and DBVW extra duty replacement covers on K-17.

| CATALOG NUMBER | UPC/DCI/NAED MFG #018997 | ORIENTATION/COVER COLOR | UNIT PKG | STD PKG | DIM A | DIM B | DIM C | DIM D | DIM E |
|----------------|--------------------------|-------------------------|----------|---------|-------|-------|-------|-------|-------|
| DSBVM1C | 09642 | Vertical/Clear | 1 | 4 | 9.058 | 7.012 | 5.129 | 1.775 | 3.221 |
| DSBVM1W | 09646 | Vertical/White | 1 | 4 | 9.058 | 7.012 | 5.129 | 1.775 | 3.221 |
| DSBHM1C | 09643 | Horizontal/Clear | 1 | 4 | 7.012 | 9.058 | 5.129 | 1.775 | 3.221 |
| DSBHM1W | 09648 | Horizontal/white | 1 | 4 | 7.012 | 9.058 | 5.129 | 1.775 | 3.221 |



PATENTED.

Note: Meets 2021 NEC section 406.9 (B) for the protection of exterior outlets where an extra duty weatherproof in use cover is required for 15 or 20 AMP receptacles installed outdoors.

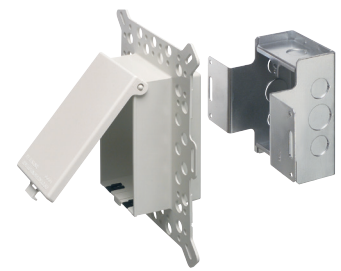
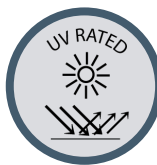
ADDITIONAL PATENTS PENDING.

FEATURES AND BENEFITS

- IN BOX replaces the installation of an electrical box and bubble cover assembly
- Install option: Cover is removable for easier device installation
- White, non-metallic portion and white cover are textured/paintable
- Installs in the wall, so less of it shows outside
- Holes in flange allow stucco to bond firmly
- For use with metal raceway systems
- Grounding wire provided
- No gaskets required
- Weatherproof in use
- Extra duty

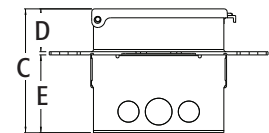
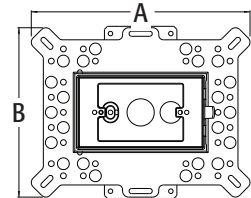


Bug Plugs ship installed in all IN BOX styles to seal unused cord hole openings.



DSBVM1W

25.0 cu. in.



Scan For Video



IN BOX FOR NEW STUCCO, TEXTURED SURFACES, AND RIGID SIDING INCLUDES

Metallic box with non-metallic, extra duty weatherproof in use cover; installed bug plugs; (1) standard duplex and (1) standard GFCI face plate; block bushing with washer; and an in place, disposable mud cover.