

Non-Metallic FR Series Device & Fixture Boxes

Extra wide flanges prevent water and air intrusion, no need for gaskets or caulking. Use for mounting coach lights on stucco and/or flat siding. For new construction.

CATALOG NUMBER	UPC/DCI/NAED MFG #018997	APPLICATION	UNIT PKG	STD PKG	DIM A	DIM B	DIM C	DIM D
FR101F	12680	Device Box	10	10	7.875	7.125	3.750	3.525
FR405F	12681	Pan Box	10	10	6.750	6.750	4.000	1.375
FR420F	09615	Fixture Box	10	10	6.750	6.750	4.000	1.986

UL **SP** **PATENTED.**
E170558 LR49636 **MADE IN USA.**

FEATURES AND BENEFITS

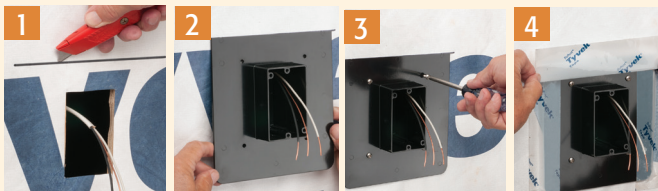
- Large 20 cubic inch volume
- Made of high strength polycarbonate
- Up to a 10 lb fixture rating
- Converts FAST for use on any cladding system up to 1-7/8"!
- Wall mount one piece design for new installations
- Easily converts for 5/8" finish thicknesses by removing back and reinstalling on the opposite side
- Extra wide flanges help meet the International Energy Conservation Code by creating a protective barrier against air and water infiltration. No gaskets or caulking required.
- Add extension ring for 7/8" thickness
- Ships pre-assembled, ready for use with 1-3/8" finish or cladding thicknesses

INSTALLATION INSTRUCTIONS

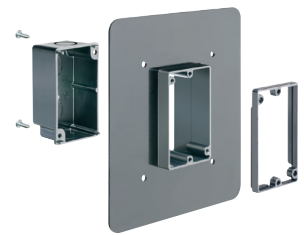
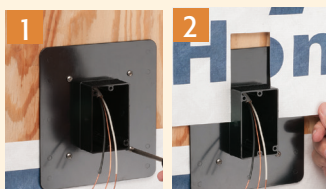


1 For 5/8" wall finish thickness, loosen two screws and remove back.
 2 Re-install the back on the **OPPOSITE** side of the box.
 3 Assembled for 5/8" finish thickness.
 4 For 7/8" wall finish thickness, install the 1/4" extension ring...
 5 ...to the front of the box.

For New Construction
Install FR series box **BEFORE**



or **AFTER** weather barrier house wrap



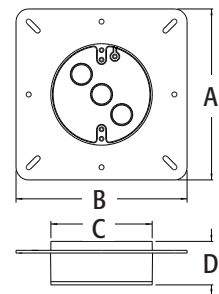
FR101F



FR405F



FR420F



ASSEMBLY OPTIONS

Box flange can be offset locating back panel to opposite side of box, as shown.

