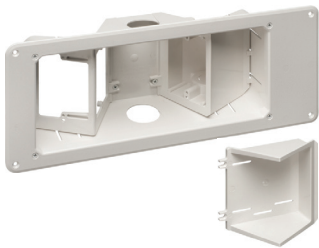
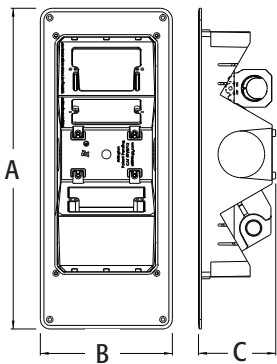




TVB712



TVB713



Scan For Video



## Non-Metallic Recessed TV Box™ with Angled Openings

For new or existing construction. Non-metallic, recessed combo boxes for power and low voltage for class 2 wiring of satellite or cable TV, speakers, etc.

CATALOG NUMBER	UPC/DCI/NAED MFG #018997	DESCRIPTION	UNIT PKG	STD PKG	DIM A	DIM B	DIM C
TVB712	09712	Power and/or low voltage	1	1	10.210	7.561	4.094
TVB713	09713	Power and multiple low voltage openings w/ interchangeable tray.	1	1	17.000	7.000	4.094
TVB613C	15250	4-Gang white cover (fits TVB713)	5	5	17.000	7.000	.127



PATENTED.

MADE IN USA.

Add suffix "GC" to Catalog # when ordering in Canada to include grounding clip, for example TVB713GC.

### FEATURES AND BENEFITS

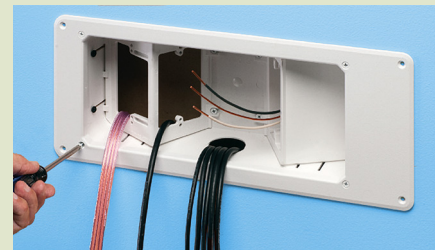
- Non-metallic, paintable trim plate
- For new or old work
  - Positioning tabs for 1/2" wall thickness assure accurate placement on stud in new construction
  - For retrofit, use enclosure (without the trim plate) as a template for the wall opening
- Optional cover available for TVB713

### INSTALLATION INSTRUCTIONS

#### Retrofit



Cut a hole using enclosure next to stud. Use box without trim plate, as a template. Pull wires and insert box in hole.



Assemble trim plate. (Retrofit must also use a minimum of (2) #6 x 1-5/8" wood screws in adjacent stud.)

#### New Work



Attach box to stud through slotted holes. Use minimum of (2) #6 x 1-5/8" wood screws. Pull wires.



Installed TVB712.



Installed TVB713.

