

Non-Metallic Bushings for Metal Studs

These bushings fit existing irregular shaped holes in metal studs, alleviating the need to punch new holes in the metal studs, weakening the structural member. Use these bushings to comply with paragraph 300.4(b)(1) of the NEC code which states that: "In both exposed and concealed locations where non-metallic sheathed cables pass through either factory or field punched, cut, drilled slots, or holes in metal members, the cable shall be protected by bushings or grommets covering all metal edges and securely fastened in the opening prior to installation of the cable."

| CATALOG NUMBER | UPC/DCI/NAED MFG #018997 | STUD SIZE | UNIT PKG | STD PKG | DIM A | DIM B | DIM C | DIM D |
|----------------|--------------------------|-----------|----------|---------|-------|-------|-------|-------|
| SB13 | 40115 | 2 X 4 | 500 | 500 | 5.751 | 2.500 | .505 | 1.300 |
| SB130 | 40130 | 2 X 4 | 100 | 100 | 5.751 | 2.500 | .505 | 1.300 |

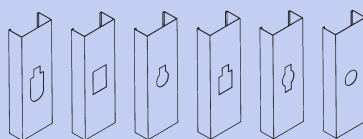
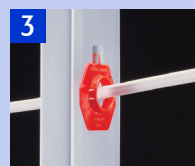


E161207 LR49636 **MADE IN USA.**

Add suffix "BL" to catalog # when ordering in black.

INSTALLATION INSTRUCTIONS

To install these bushings in an irregular shaped hole, pass one end of the joined connector through the hole in the stud. Snap the bushing and the washer ends together. There's no need to separate the two halves. If a punched hole is required, the SB13 can be installed in a standard 1" trade size, round punched hole (1-3/8" diameter). Snap the bushing end into the hole.



Common hole configurations in metal studs.