

## Plated STEEL Cut-in Mounting Bracket

**NEW!**

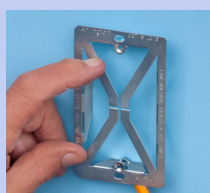
Our LV1S plated steel cut-in mounting bracket, with its unique X-shaped bracket design, provides excellent stability and secure installation of low voltage devices and cable, in an existing wall – without an electrical box.

CATALOG NUMBER	UPC/DCI/NAED MFG #018997	DESCRIPTION	Adjusts to Fit Wall Thickness	Unit PKG	STD PKG	DIM A	DIM B	DIM C
LV1S	99325	Single-gang Plated Steel	1/4" to 1-1/4"	100	100	3.812	2.531	3.281

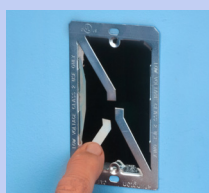


PATENT PENDING.

### INSTALLATION INSTRUCTIONS



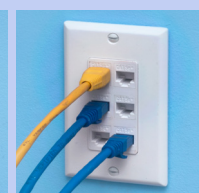
1. Use the bracket as a template for the opening. Trace the bracket along the inside of bracket flange.



2. Cut open and insert bracket into opening. Bend all four corners to set LV1S securely in opening.



3. Wire low voltage device.



4. Done!

## Low Profile Low Voltage Mounting Bracket

Single gang for use with 1/4" or 5/8" drywall installed on cast concrete or concrete block walls with furring strips low voltage Class 2 only.

CATALOG NUMBER	UPC/DCI/NAED MFG #018997	DESCRIPTION	UNIT PKG	STD PKG	DIM A	DIM B	DIM C
LV1LP	58177	Single Gang	10	100	4.260	2.500	1.200
LV1RP	58179	Single Gang	25	25	5.625	3.875	2.053
LV1XL	58178	Single Gang	10	100	4.250	2.500	1.900
LV2LP	23102	2-Gang	5	50	4.250	4.185	1.245
LV2RP	58183	2-Gang	10	10	5.250	5.375	2.135

  **PATENTED.**  
E253895 LR49636 **MADE IN USA.**

### FEATURES AND BENEFITS

- Bracket is its own template for cut out
- Non-metallic, better than metal and costs less too
- For communications, cable TV, computer wiring
- Mounting wings hold bracket securely against wall when screws are tightened
- Adjusts to fit 1/4" to 5/8" thick wallboard, paneling, or drywall



### INSTALLATION SHOTS



LV1LP

