

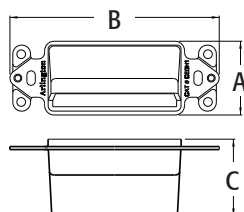


CED1

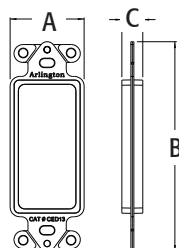
CED13



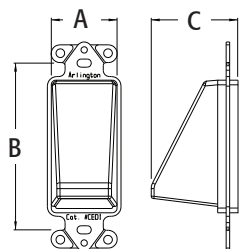
CEDH1



CEDH1



CED13



CED1

THE SCOOP™ Reversible, Non-Metallic Cable Entrance Hoods for Existing Cable

White cable entrance hood for use with decorator style wall plates. Protects cable and provides installation versatility. Designed to install low voltage Class 2 only.

CATALOG NUMBER	UPC/DCI/NAED MFG #018997	DESCRIPTION/ PLATE COLOR	UNIT PKG	STD PKG	DIM A	DIM B	DIM C
CED1	10465	Single-Gang/White	1	25	1.450	4.112	1.709
CED13	13000	Single-Gang/White	1	25	1.450	4.111	.410
CEDH1	10478	Single-Gang, Horiz. /White	1	25	4.110	1.450	1.510

PATENTED.

MADE IN USA.

Add suffix "BL" to Catalog # when ordering in black, for example CED1BL. **Includes(2) #6 screws.**

FEATURES AND BENEFITS

- Protects low voltage cable against damage
- Best way to run cable where you need it
- CED13 provides widest opening for cables with large connectors
- Reversible for installation versatility. Use it facing IN or OUT!

Scan For Video



INSTALLATION INSTRUCTIONS



CED1 Facing OUT



CED1 Facing IN



CED13

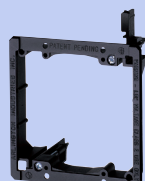


CEDH1

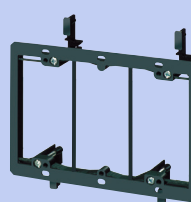
Easy to Install Use one or more of Arlington's low voltage mounting brackets (LV1 - LV4 not supplied) to install CED Series.



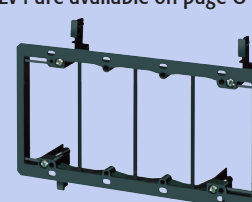
LV1*



LV2*



LV3*



LV4*

*LV1-LV4 are available on page O-3