

Recessed Cover Kits for 5.5" Concrete Floor Box

Two low voltage openings. Ultra thin stamped steel flange cover, flush to floor in use and blank cover. Installed UL Listed 20A tamper resistant decorator style receptacle.

CATALOG NUMBER	UPC/DCI/NAED MFG #018997	DESCRIPTION	UNIT PKG	STD PKG	DIM A	DIM B	DIM C
PLATED ZINC COVER, STEEL FLANGE, BLACK RECEPTACLE							
FLBC5540AB	21165	Antique Bronze	1	1	6.501	5.393	3.489
FLBC5540MB	21163	Brass	1	1	6.501	5.393	3.489
FLBC5540NL	21164	Nickel	1	1	6.501	5.393	3.489
S/B POWDER COATED ZINC COVER, STEEL FLANGE, BLACK RECEPTACLE							
FLBC5540BL	21160	Black	1	1	6.501	5.393	3.489
FLB5540BR	21161	Brown	1	1	6.501	5.393	3.489
FLBC5540LA	21162	Light Almond	1	1	6.501	5.393	3.489

 **PATENTED.**
E170558 **MADE IN USA.**

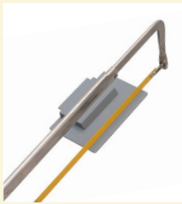
FEATURES AND BENEFITS

- Ultra thin flange and recessed devices reduce trip hazard caused by protruding plugs
- Six finishes/colors for the die-cast zinc cover: steel flange PLATED in brass, nickel, and antique bronze OR POWDER COATED die-cast zinc cover in black, brown, and light almond

KITS INCLUDE

Non-metallic leveling ring assembly with installed UL Listed, tamper resistant 20A decorator style receptacle, (2) low voltage keystone holder inserts, (2) low voltage blank inserts, blank cover w/ gasket, in use slotted plug cover, (3) #8-32 x 5/8" flat head screws, (2) low voltage dividers

INSTALLATION INSTRUCTIONS



If using low voltage dividers cut off same amount as you cut off the box. (See instructions with product to install blank inserts into keystone holders.)



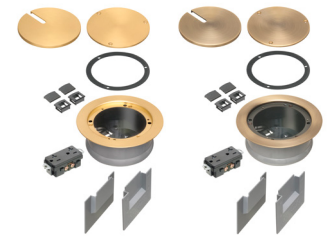
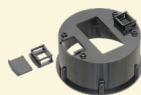
Wire receptacle and or low voltage devices. Seal underside of flange with silicone sealant if desired (not included).



After installing flooring, secure leveling ring assembly to floor with PVC cement applied around flange.



Cover options: Install gasket and blank with #8-32 x 5/8" screws or install in use cover (no screws required).



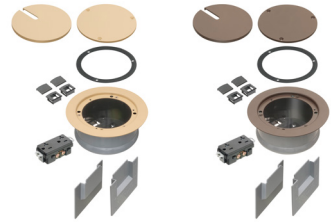
FLBC5540MB

FLBC5540AB



FLBC5540BL

FLBC5540NL



FLBC5540LA

FLB5540BR

