

## ONE-BOX™ Non-Metallic Outlet Boxes

For new or retrofit construction.

CATALOG NUMBER	UPC/DCI/NAED MFG #018997	DESCRIPTION/ CU. IN.	UNIT PKG	STD PKG	DIM A	DIM B	DIM C
F101*	43626	Single-gang vert./21.3	50	50	2.280	3.740	3.510
F101H*	43634	Single-gang horiz./22.0	20	20	3.720	2.280	3.500
F102*	43640	2-Gang vert./42.1	25	25	4.110	3.740	3.510
F102D	43544	Voltage divider	25	25	.233	3.560	3.400
F103*	43641	3-Gang vert./61.2	20	20	5.930	3.740	3.510
F104*	43642	4-Gang vert./80.5	20	20	7.740	3.740	3.510



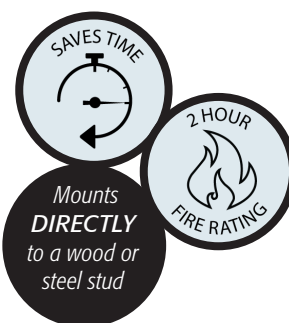
PATENTED.

MADE IN USA.

\*Add suffix "GC" to Catalog # when ordering in Canada to include grounding clip, for example F101GC.

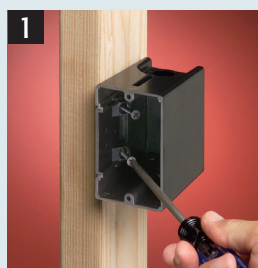
### FEATURES AND BENEFITS

- For a variety of wall thicknesses, the ONE-BOX is removable, adjustable, and re-mountable even after the wall is in place
- Angled screws inside the ONE-BOX affix it firmly to the stud
- Mounts directly to a wood or steel stud for a super secure installation
- For both power and low voltage applications with the F102D voltage divider installed
- NM cable connector supplied
- Fast and easy to install
- 2 hour fire rating

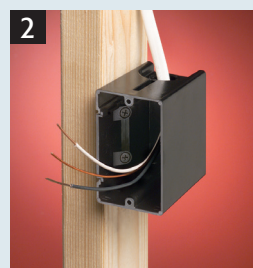


### INSTALLATION INSTRUCTIONS

#### F101 New Construction

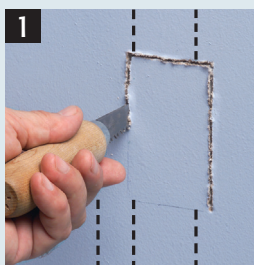


Attach ONE-BOX to wood or steel stud with captive installation screws. If the box is too far forward or back, simply back the screws out and reposition.

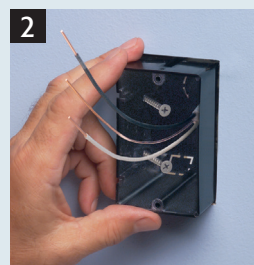


Pull wire through the knockout connector. (Ships with installed NM cable connector.)

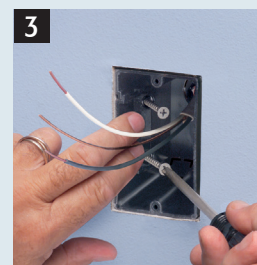
#### F101 Retrofit



For old work position ONE-BOX adjacent to stud. Use box as the template to cut hole.



Pull wire. Insert ONE-BOX.



Mount ONE-BOX directly to stud with shipped in place screws.