

## Gangable Non-Metallic Boxes

Build the box you need with these nail and screw on gangable Non-metallic boxes for new & retrofit work.

CATALOG NUMBER	UPC/DCI/NAED MFG #018997	DESCRIPTION	UNIT PKG	STD PKG	DIM A	DIM B	DIM C
FE102C	01582	Each adds one gang Center section for FEN102 and FES102	10	10	3.688	3.500	2.686
FE102D	01586	Optional Voltage Divider	25	25	3.476	3.335	.125
FE102E	01585	2-Gang (includes 2 brackets) Mounts with brackets for new construction	10	10	4.250	3.500	2.236
FEN102	01580	2-Gang (includes 1 bracket) Nail on for new construction	1	10	6.002	3.500	2.044
FER102	01583	2-Gang w/ mounting wing screws for old work	1	10	4.258	3.500	2.097
FER102C	01584	Each adds one gang Center section for old work use with FER102	10	10	3.615	3.500	1.812
FES102	01581	2-Gang (includes 1 bracket) Screw on for retrofit or new construction	1	10	3.688	3.500	2.044
FE101	06930	Single-gang plate Converts any box to single-gang	10	10	3.688	3.500	2.754

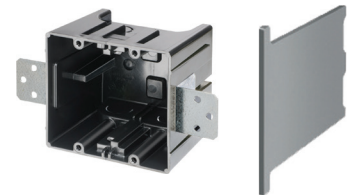
 **PATENTED.**  
E170558 **MADE IN USA.**

### FEATURES AND BENEFITS

- Use a screwdriver to disassemble or separate the parts. Add or remove the center section(s), then snap the pieces back together, fast and easy!
- Great looking installation of multiple gang boxes
- Nail on style for new construction or screw on style for new or old construction
- In old work mounting wings hold the box securely against the wall

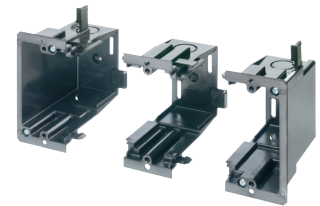
**UL Listed**  
up to **10 GANGS**  
(two end sections  
plus up to 8 center  
sections)

Scan For Video



FE102E

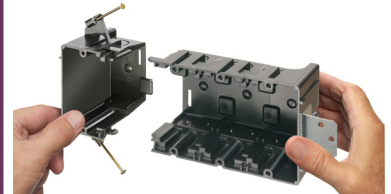
FE102D



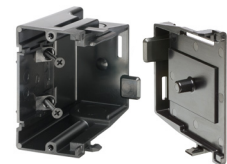
**FER102** screw on with one **FER102C** center



**FES102** Screw on with one **FE102C** center



**FEN102** nail on with two **FE102C** centers



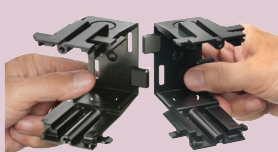
**FES102** screw on with **FE101** plate  
Snap together to create single gang box.



**FEN102** Nail on with  
five **FE102C** centers

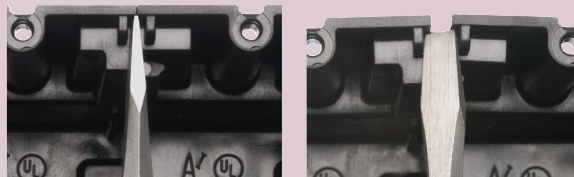
### INSTALLATION INSTRUCTIONS

#### Assemble

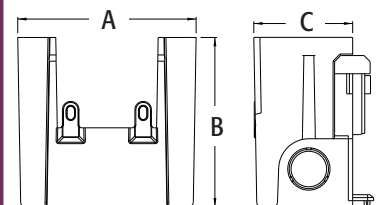


Each section adds one gang to the box. Snap the pieces together to make your desired box. From three to ten gangs.

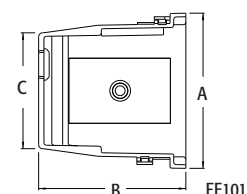
#### Disassemble



To disassemble or separate the parts insert a screwdriver between the tabs at the top of the box (on each side) as shown above, and twist.



FES102



FE101