

Non-Metallic Outlet Box for New Construction

Adjustable for wall thicknesses from 1/4" to 1-1/2". It's perfect for use when the final wall thickness is unknown. Mounts directly to a wood or steel stud.

CATALOG NUMBER	UPC/DCI/NAED MFG #018997	DESCRIPTION/ CU. IN.	UNIT PKG	STD PKG	DIM A	DIM B	DIM C
FA101*	04241	Single-gang/Vertical/21.0	25	25	3.720	2.299	3.875
FA101H*	11102	Single-gang/Horizontal/21.0	25	25	3.720	2.299	3.875
FA101LP	76880	Single-gang/Vertical/18.3	25	25	3.720	2.299	3.320
FA102*	04242	2-Gang/43.5	10	10	3.720	4.111	3.875
FA102D	04245	Voltage divider	25	25	3.531	3.775	.105
FA103*	04243	3-Gang/65.0	10	10	3.720	5.923	3.875
FA104	04244	4-Gang/87.0	10	10	3.720	7.735	



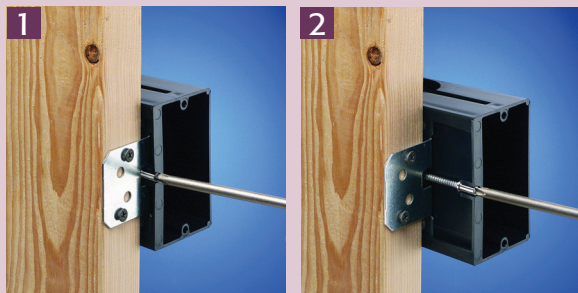
PATENTED.
MADE IN USA.

Add suffix "GC" to Catalog # when ordering in Canada to include grounding clip, for example FA101GC. *2 hour fire rating

FEATURES AND BENEFITS

- No more set back boxes, IN/OUT BOX™ depth adjusts before OR after the wall finish is done
- Depth adjustment screw is accessible even after the wall finish is in place
- Secure installation. Mounts to wood or steel studs in new construction
- FA101LP is low profile and designed for new work installations with shallower wall cavities
- FA102D low voltage separator for use with multiple gang versions
- Complies with 2020 NEC, 314.20 for set back boxes
- Fast and easy to install

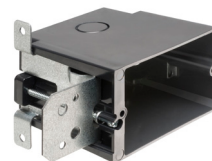
INSTALLATION INSTRUCTIONS



- 1) Attach IN/OUT BOX to wood or steel stud with captive installation screws. Feed the wires through the knockout.
- 2) If the box is too far forward or back simply adjust the depth by turning the screw.



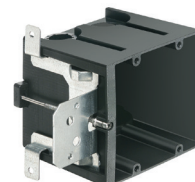
FA101



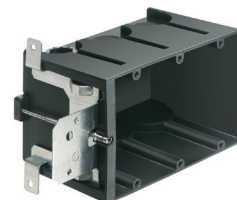
FA101H



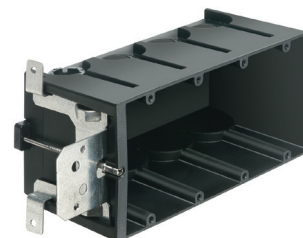
FA101LP



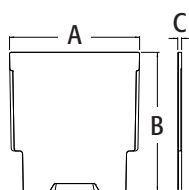
FA102



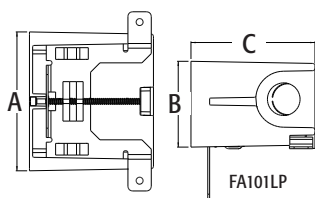
FA103



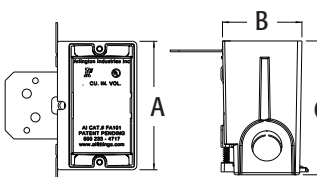
FA104



FA102D



FA101LP



FA101



FA102D