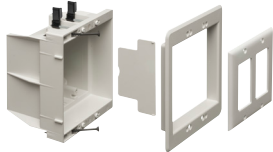




DVFR1W



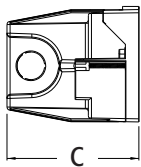
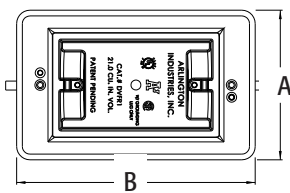
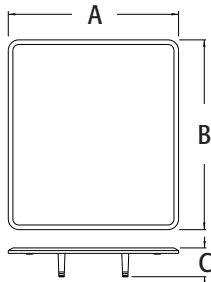
DVFR2W



DVFR3W



DVFR4W



Scan For Video



DVFR1W

Scan For Video



DVFR2W

## Recessed Indoor IN BOX® for New & Retrofit Construction

Non-metallic recessed electrical boxes with trim plates and wall plates. Low voltage divider included for multiple gang boxes.

CATALOG NUMBER	UPC/DCI/NAED MFG #018997	DESCRIPTION / CU. IN.	UNIT PKG	STD PKG	DIM A	DIM B	DIM C
DVFR1W†‡Δ	14330	Single Gang / 21.0	1	4	4.200	6.698	3.875
DVFR2W*†‡Δ	14331	2-Gang, White / 34.0	1	4	6.012	6.698	3.875
DVFR3W*†	14340	3-Gang, White / 49.3	1	1	7.930	6.818	3.875
DVFR4W*†	14342	4-Gang, White / 64.5	1	1	9.742	6.818	3.875
DVFC	14337	2-Gang, White Cover	10	10	6.012	6.698	1.017
DVFR3C	10570	Non-Metallic Blank Cover for 3-Gang Box	10	10	9.742	6.818	1.017



**PATENTED.**  
**MADE IN USA.**

**IN BOX®**

### FEATURES AND BENEFITS

- Plugs don't extend past the wall like a regular box
- Recessed box allows items, such as furniture, to be placed closer to the wall
- Mounting wings hold bracket securely against wall when screws are tightened
- Trim plate is textured/paintable
- For power or low voltage applications
- ‡2 hour fire rating



Box positioning tabs are set for 1/2" or 5/8" drywall.



### INDOOR IN BOX INCLUDES

Recessed box, trim plate, (1) standard duplex and (1) standard GFCI face plate, (1) NM94 cable connector, (2) mounting screws, and (2) installation screws.

DVFC can be used with the following Arlington Boxes:

- DVFR1W
- DVFR2W
- TVBS505
- TVBU505
- TVBU505BL
- TVBR505K



**New Work:**  
Screws provided for fast and easy mounting to stud.



Attractive!  
DVFR1W shown.



Optional box cover.  
DVFC shown.