

Small Diameter Sconce Boxes for Retrofit Construction

Non-metallic, 3-1/4" diameter sconce/fixture boxes with large interior volume. 6.8 cubic in.

CATALOG NUMBER	UPC/DCI/NAED MFG #018997	DESCRIPTION/ ATTACHMENT	UNIT PKG	STD PKG	DIM A	DIM B	DIM C	DIM D
FSC3212R	43633	Retrofit/Screws, Bracket	25	25	4.280	4.100	1.240	3.130



PATENTED.

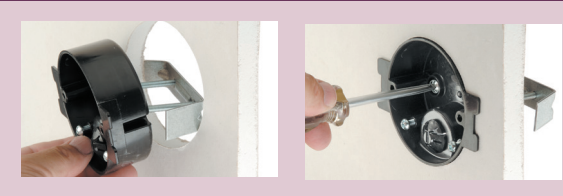
E170558

MADE IN USA.

FEATURES AND BENEFITS

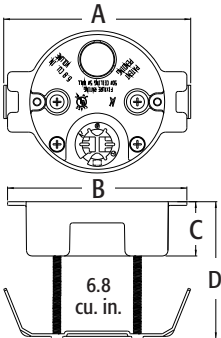
- Ships with installed NM cable connector and captive fixture bracket installation screws
 - Small diameter allows most sconce light canopies to cover the box, hiding it completely
- Ready to use and easy to install
 - No loose parts, self contained
 - For retrofit construction: sconce lights up to 3 lbs

INSTALLATION INSTRUCTIONS



Cut hole in drywall, insert box and bracket. Box is secured by tightening screws that pull bracket against drywall.

FITS DOUBLE DRYWALL OR UP TO 1.90"



Use this Box to center a **SCONCE LIGHT** over a **MIRROR**