

Non-Metallic and Plated Steel 4x4 Boxes

For retrofit construction. Screw hole patterns for 4x4 and 2-gang devices. Available in non-metallic (black and red plastic) and plated steel versions.

CATALOG NUMBER	UPC/DCI/NAED MFG #018997	DESCRIPTION/ ATTACHMENT	UNIT PKG	STD PKG	DIM A	DIM B	DIM C
FSR404BL†	00596	Non-metallic 4x4 box, Black	25	25	4.250	4.185	2.815
FSR404RD†	00598	Non-metallic 4x4 box, Red	25	25	4.250	4.185	2.815
FSR404S*	00597	Steel 4x4 box, Plated	25	25	4.250	4.185	2.815
FSR404SRD*	00599	Steel 4x4 box, Red	25	25	4.250	4.185	2.815
FSR404SD*	00600	Non-metallic 4x4 box divider	25	25	3.581	0.141	2.750



PATENTED.
MADE IN USA.

*cULus listed. † 2 hour fire rating

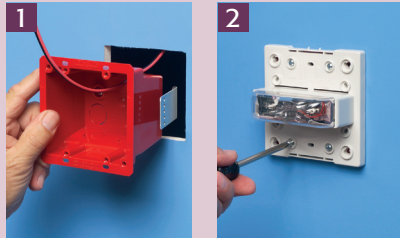
FEATURES AND BENEFITS

- Non-metallic and steel versions in red are ideal for installations of fire alarms or signaling devices
- Spring clip holds box securely against wall when screws are tightened
- Weight rating: 6 lbs for walls; 10 lbs for ceilings
- Non-metallic boxes include (2) NM94 cable connectors
- 1/2" and 3/4" knockouts

For wall thicknesses up to 1-1/4", field modify bracket for thicknesses greater than 1-1/4".

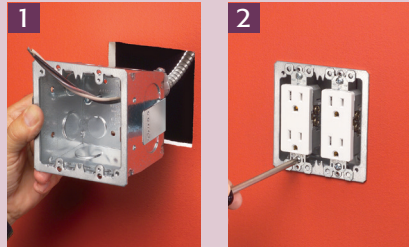


Typical Installation of Low Voltage Fire Alarm Box using Red 4x4 Box



- 1) Determine position of device. Cut hole. Pull wire(s) through appropriate knockout (connector). Install box in opening. (FSR404S shown)
- 2) Install fire alarm (or other device) through the screw holes in the box.

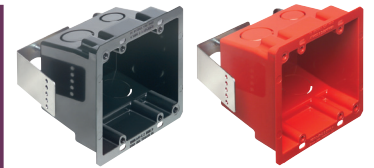
Typical Installation of Device using Steel or Black Non-metallic 4x4 Box



- 1) Determine position of device. Cut hole. Pull wire(s) through appropriate knockout (connector). Install box in opening. (FSR404S shown)
- 2) Install devices through the screw holes in the box.

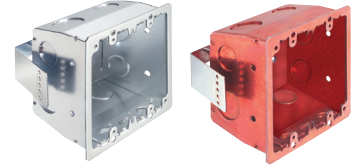


Scan For Video



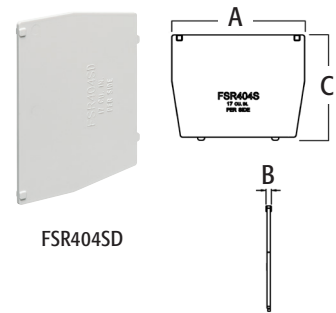
FSR404BL

FSR404RD

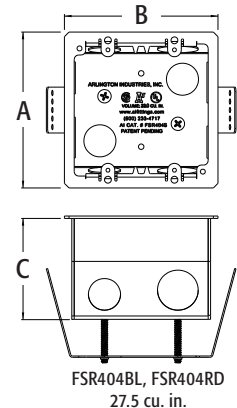


FSR404S

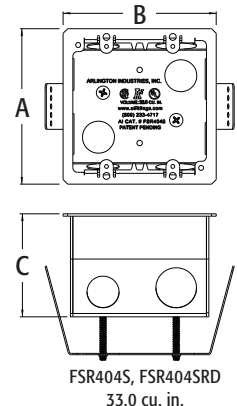
FSR404SRD



FSR404SD



FSR404BL, FSR404RD
27.5 cu. in.



FSR404S, FSR404SRD
33.0 cu. in.