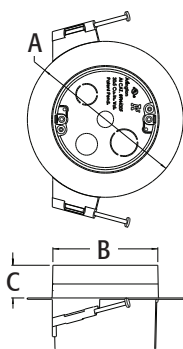




F426F



FN430F



ONE-BOX™ Vapor Boxes for Fixtures

Versatile non-conductive fixture box for new construction. Mounts directly to a wood or steel stud.

CATALOG NUMBER	UPC/DCI/NAED MFG #018997	DESCRIPTION/ CU. IN.	UNIT PKG	STD PKG	DIM A	DIM B	DIM C
F426F†^	06903	Round screw on 28.0 cu. in.	20	20	6.250	4.233	.500
FN430F‡	15100	Round nail on 30.5 cu. in.	20	20	6.250	4.230	.500
FN440F*‡	15120	Round nail on 39.5 cu. in.	20	20	6.250	4.210	1.250



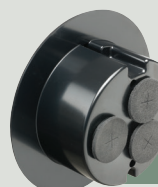


PATENTED.
MADE IN USA.

*For use with double drywall installation. † F426FGC is cULus listed. Add suffix "GC" to Catalog # when ordering in Canada, for example F426FGC. Refer to chart on page R-25 for load ratings and number of single conductors. Refer to L-8, Q-4, Q-11 through Q-13, and R-2 for additional Vapor Boxes.

FEATURES AND BENEFITS

- Non-metallic, non-conductive
- Ships with captive mounting screws
- Includes additional gasket material for knockouts
- 2 hour fire rating



F426F

NM cable connectors with gasket material already installed!

Save time by sealing knockouts before installation

