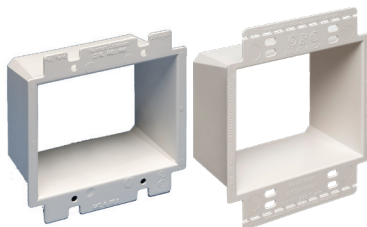




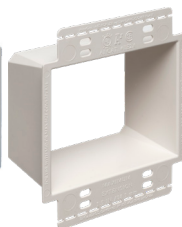
BE1



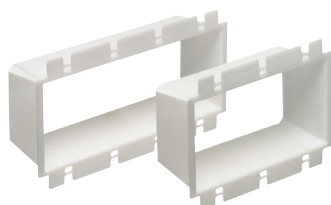
BE1X



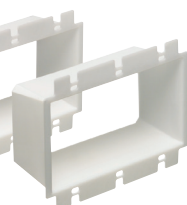
BE2



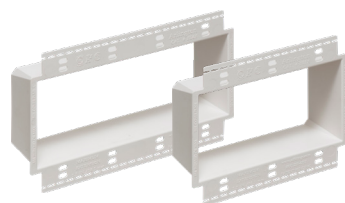
BE2X



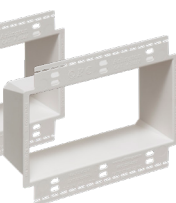
BE4



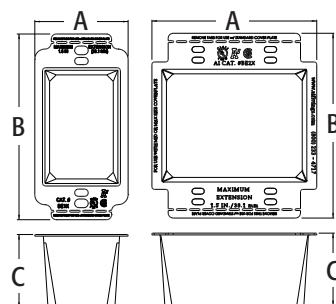
BE3



BE4X

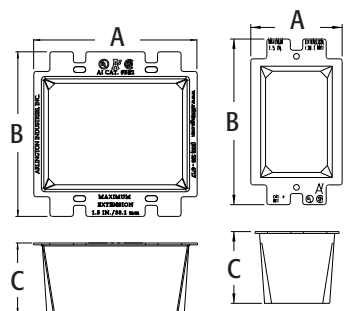


BE3X



BE1X

BE2X



BE2

BE1

Box Extenders

Levels and supports the wiring device where the box is set back from the wall surface. Extends the box up to 1-1/2".

CATALOG NUMBER	UPC/DCI/NAED MFG #018997	DESCRIPTION	UNIT PKG	STD PKG	DIM A	DIM B	DIM C
BE1	40160	Single-gang	25	25	2.313	4.188	1.813
BE1X	40171	Single-gang w/ larger flange <i>Better device support in oversized or miscut wall openings.</i>	25	25	2.325	4.628	1.813
BE1BAG	51905	Single-gang	1	100	2.313	4.188	1.813
BE2	48960	Two-gang	25	25	4.100	4.188	1.813
BE2X	48973	Two-gang w/ larger flange	25	25	4.125	4.625	1.813
BE3	48967	Three-gang	10	10	5.937	4.188	1.813
BE3X	48974	Three-gang	10	10	5.937	4.625	1.813
BE4	48968	Four-gang	10	10	7.749	4.188	1.813
BE4X	48975	Four-gang	10	10	7.749	4.625	1.813



MADE IN USA.

BE1BAG includes two #6 x 2" long screws.

FEATURES AND BENEFITS

- Functions with all standard devices, switches, and GFCIs
- Allows the contractor to comply with 2020 NEC Article 314.20
- Levels and supports the wiring device where the box is set back from the wall surface (adjusts up to a 1-1/2" box extension)
- Works in handy boxes and 4" square electrical boxes with plaster rings for single switches or receptacle
- Manufactured from 105°C continuous use 94V0 rated flame retardant plastic for safer installations
- 2 hour fire rating

Note: To install without removing device wires, tilt the device through the BE1 at a slight angle, straighten it and tighten the screws!

INSTALLATION INSTRUCTIONS

PROBLEM...



Electrical box set back from the wall surface.

SOLUTION...



1
Pull wires through. Press the BE1 firmly into the electrical box.



2
Attach wires to receptacle. Tighten screws for a level, fully supported, code compliant installation.



Scan For Video

