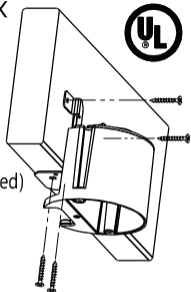
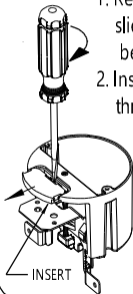




## FA426 ADJUSTABLE CEILING FIXTURE BOX

CAUTION: TURN OFF POWER AT MAIN PANEL BOX

1. Remove insert from the front of FA426 to access metal slide-plate mounting flange. (A flat blade screwdriver can be used to assist in removal of insert as shown)
2. Install FA426 to joist using a minimum of (4) #6 screws (2 thru front flange, 1 in each rear position) (Screws not provided)
3. Slide insert back into front of box.
4. Pull NM Cable and install in provided NM connector.
5. After wallboard is complete, adjust position of FA426 box as necessary with adjustment screw



All wiring to be in accordance with National, State, & Local Electrical Codes

800-233-4717

Fax: 570-562-0646

www.aifittings.com - E-MAIL : sales @ aifittings.com