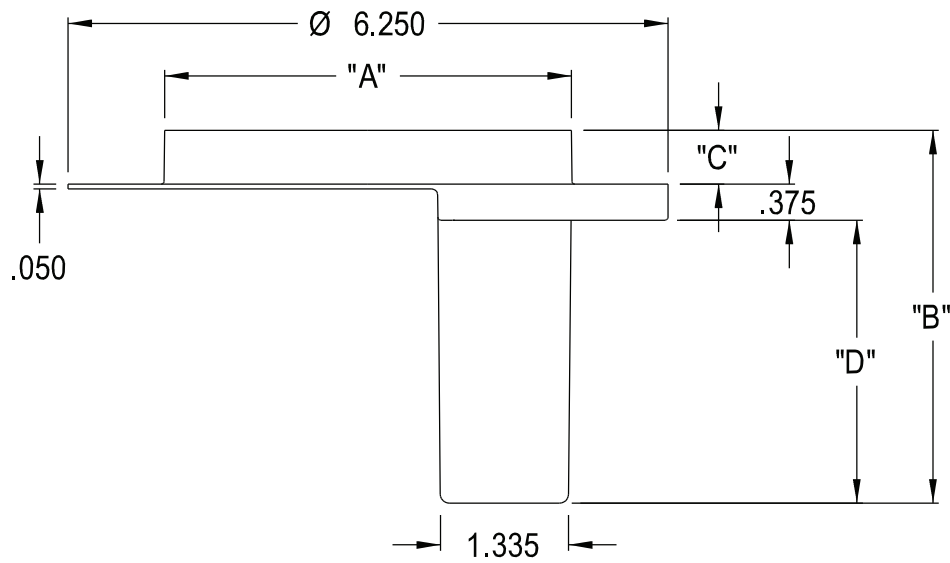


(ISOMETRIC VIEW)



PART NO	"A"	"B"	"C"	"D"
FB442F	Ø 4.240	3.885	.562	2.948
FB442FD	Ø 4.227	4.635	1.312	2.948
FB443F	Ø 4.240	5.183	.562	4.246
FB443FD	Ø 4.227	5.933	1.312	4.246