

# 90° SNAP<sup>2</sup>IT<sup>®</sup> MC Cable Connectors

Made in USA



**MORE**  
on  
reverse

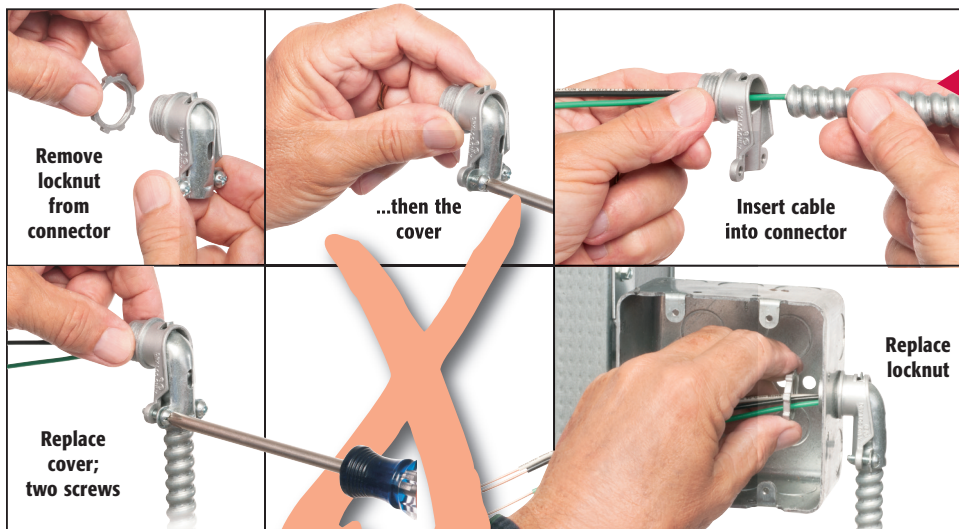
*Easy Snap-in Insertion • No Tools...Saves Time*



2-screw  
850

over 90° 2-screw  
MC connectors!

**AT THE SAME COST PER CONNECTOR!**



Arlington's new **90 DEGREE SNAP<sup>2</sup>IT<sup>®</sup>** fittings are *easy to insert* – and handle the widest variety of cables!

- **Widest total cable ranges**  
Our 90° Snap<sup>2</sup>It<sup>®</sup> connectors accommodate cables from 14/2 to 10/3.
- **Widest variety of cables**  
For AC, MC, HCF, MC continuous corrugated aluminum cable, MCI-A cables (steel and aluminum), AC90 and ACG90.
- **Super-secure installation**  
No pullout!
- **Easy, screwdriver removal**  
from box; connector is reusable
- **Fully assembled – Ready to use**  
with and without insulated throat



See installation instructions on reverse.

**EASY to INSTALL**

**90° Snap2It Connector  
Saves Time!...and  
Costs the Same as a  
2-screw 90° Connector**

**Eliminates  
multiple steps of  
2-screw connector**

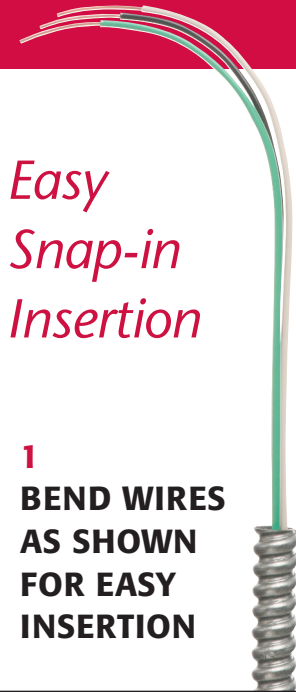


**Arlington**

1 Stauffer Industrial Park  
Scranton, PA 18517  
800/233.4717  
Fax 570/562.0646  
[www.aifittings.com](http://www.aifittings.com)

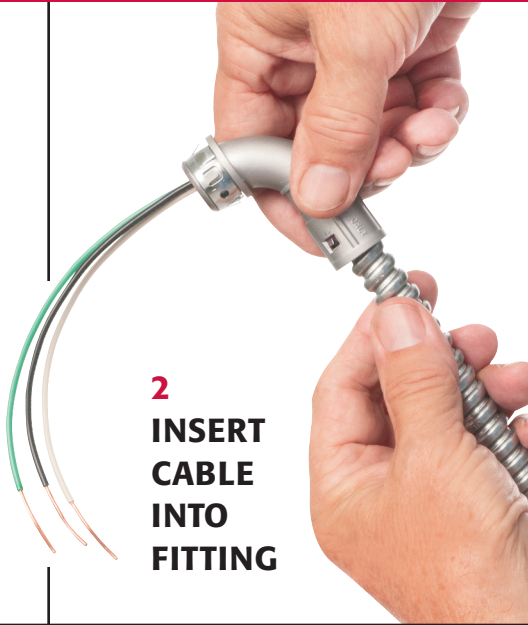
# 90° SNAP<sup>2</sup>IT<sup>®</sup> MC Cable Connectors

Made in USA 

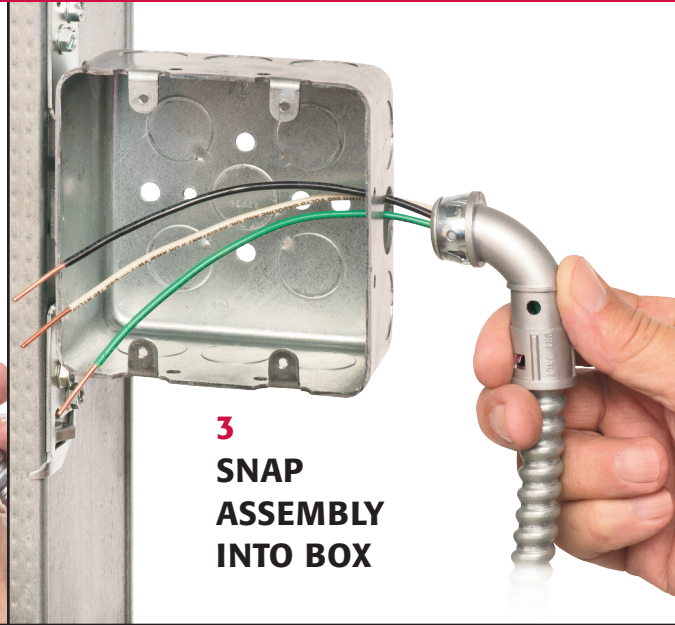


*Easy  
Snap-in  
Insertion*

**1**  
**BEND WIRES**  
**AS SHOWN**  
**FOR EASY**  
**INSERTION**



**2**  
**INSERT**  
**CABLE**  
**INTO**  
**FITTING**



**3**  
**SNAP**  
**ASSEMBLY**  
**INTO BOX**



38900ST



38900AST  
with insulated  
throat



40900ST  
tinted red  
inside



40900AST  
with insulated  
throat and  
red tint inside

## 90° Snap2It<sup>®</sup> Connectors

CATALOG NUMBER	UPC/DCI/NAED MFG #01 8997	CABLE TYPE	DIAMETER RANGE	CABLE RANGE	UNIT PKG	STD PKG
38900ST	04098	MC/HCF/AC Steel & Aluminum	.405 to .605	14/2 and 12/2		
38900AST	04093	MCI-A Steel & Aluminum	.440 to .550	w/ and w/o ground		
		AC90, ACG90	.440 to .550	14/3, 14/4, 12/3, 12/4, 10/2, 10/3	25	250
		Flexible Metal Conduit Steel & Aluminum (RWFMC)	3/8" Flex*			

\*CSA Listed w/ anti-short bushing ONLY

## Tinted red inside fitting

CATALOG NUMBER	UPC/DCI/NAED MFG #01 8997	CABLE TYPE	DIAMETER RANGE	CABLE RANGE	UNIT PKG	STD PKG
40900ST	04099	MC/HCF/AC Steel & Aluminum	.485 to .610	14/3, 12/2 and 12/3		
40900AST	04092	MCI-A Steel & Aluminum	.480 to .580	w/ and w/o ground		
		AC90, ACG90	.480 to .550	14/4, 12/4, 10/2, 10/3	25	250
		Flexible Metal Conduit Steel & Aluminum (RWFMC)	3/8" Flex*			

\*CSA Listed w/ anti-short bushing ONLY



**Arlington**  
1 Stauffer Industrial Park  
Scranton, PA 18517  
800/233.4717  
Fax 570/562.0646  
www.aifittings.com

***COSTS THE SAME AS A 2-SCREW  
90° CONNECTOR!***

Distributed by

Patent pending