

# Large Flange Listed Box Extenders

Made in USA 

**NEW!**  
Larger  
flange

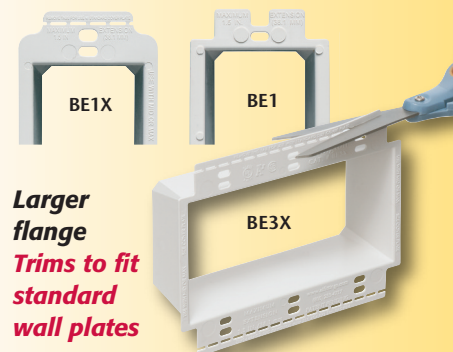
*THE Answer to Set Back Electrical Boxes – Now in 3 and 4-Gang!*



Arlington's non-conductive box extenders extend set back metal or non-metallic electrical boxes up to 1-1/2 inches, the easy way!

They work with any single gang device and most steel and non-metallic outlet boxes, providing a level, fully supported wiring device that's flush with the wall surface. In steel boxes they prevent arcing and shorting by creating a barrier between the box and device screws.

**Now available in three- or four-gang,** our newest box extenders have a slightly larger flange that provides extra device support when the wall opening is miscut or oversized. They accommodate midi or jumbo cover plates – and they're trimmable along the perforated flange for use with standard plates. Best of all they **cost the same as our 'regular' flange box extenders.** If you normally use a midi plate these are the box extenders for you!



**Larger flange**  
**Trims to fit standard wall plates**

- Complies with NEC 2017, article 314.20 for set back boxes
- 2-hour fire rating



**Larger perforated flange**  
for better device support...



Catalog Number	UPC/DEI/NAED Mfg. #018997	Description <b>LARGE FLANGE BOX EXTENDERS</b>	Std Pkg
<b>BE1X</b>	40171	Single-gang with larger flange	25
<b>BE2X</b>	48973	Two-gang with larger flange	25
<b>NEW! BE3X</b>	48974	Three-gang with larger flange	10
<b>NEW! BE4X</b>	48975	Four-gang with larger flange	10

Works in handy boxes and 4" square electrical boxes with plaster rings for a single switch or receptacle. Functions with all standard devices, switches and GFCIs.

Patented/Additional patents pending

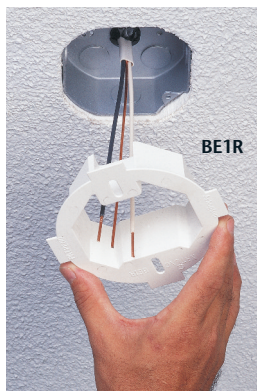
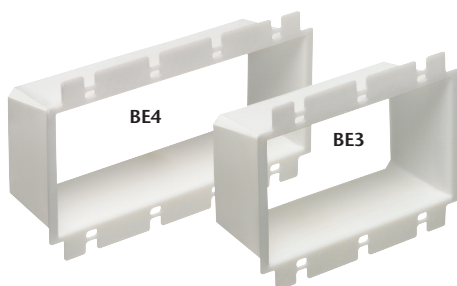
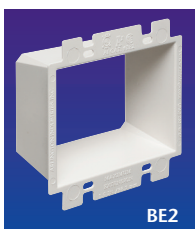


**Arlington®**

1 Stauffer Industrial Park  
Scranton, PA 18517  
**800/233.4717 • Fax 570/562.0646**  
**www.aifittings.com**

# Regular Size Flange Listed Box Extenders

*Extend set back metal or non-metallic electrical boxes up to 1-1/2"*



Catalog Number	UPC/DEI/NAED Mfg. #018997	Description <b>'REGULAR' FLANGE BOX EXTENDERS</b>	Std Pkg
BE1	40160	Single-gang	25
BE2	48960	Two-gang	25
BE3	48967	Three-gang	10
BE4	48968	Four-gang	10
Works in handy boxes and 4" square electrical boxes with plaster rings for a single switch or receptacle. Functions with all standard devices, switches and GFCIs.			
BE1R	40160	Fits 3-1/2" and 4" round or octagonal ceiling boxes. Trimmable for shallow boxes or obstructions	25

Made in USA

*No three or four-gang Box Extenders on the truck? No problem!*

**BE1** Single gang box extenders are trimmable for use in multiple boxes.



LEAVE ON  
outside flange

CUT THE FLANGES OFF  
the inside box extender(s)

LEAVE ON  
outside flange



**Arlington®**

1 Stauffer Industrial Park  
Scranton, PA 18517  
800/233.4717 • Fax 570/562.0646  
www.aifittings.com

Distributed by

Patented/  
Additional patents pending

BoxExt 12/18 25M