

NEW!
more on
reverse

Flanged Conduit Cap/Insulating Bushing with Coupler

Economical Way to Run Low Voltage Cable in New Concrete



NEW!

Patent pending



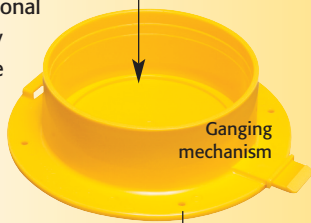
Three EMT400CFT bushings coupled together in commercial, six-story poured concrete slab.

Save time and money when running low voltage cable between horizontal concrete floors or vertical walls with Arlington's flanged conduit cap/insulating bushing.

These bushings save by eliminating the need for an elaborate, expensive support system for multiple EMT conduit.

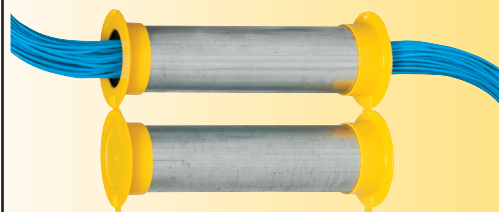
Simply nail the flange to the plywood form and insert the conduit in the cap.

Add additional conduit by joining the necessary bushings together using the built-in ganging mechanism.



Nail to plywood form through openings in flange

Cap the opposite ends of conduit with another set of bushings to seal off.



After the concrete sets, remove the center of the cap to use as a bushing for low voltage cable.

- Sizes: 2", 3" and 4" for EMT conduit. 3" and 4" also fit rigid, IMC and PVC rigid conduit.
- Easy to use, economical alternative for multiple conduit support.



Arlington®

1 Stauffer Industrial Park
Scranton, PA 18517
800/233.4717 • Fax 570/562.0646
www.aifittings.com

Made in USA

Flanged Conduit Cap/Insulating Bushing with Coupler

Run Low Voltage Cable in New Concrete the EASY WAY!

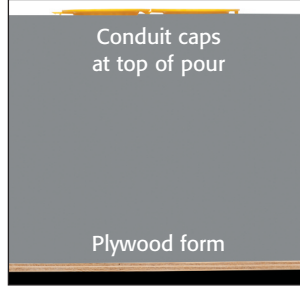
Easy, time-saving installation



Attach flange to bottom of concrete pour frame (plywood). Insert EMT. Add another EMTCT conduit cap to the other end of EMT conduit.



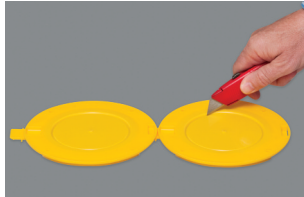
Add and join conduit caps until you reach the desired number of conduits. Ready for concrete pour.



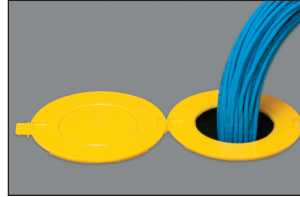
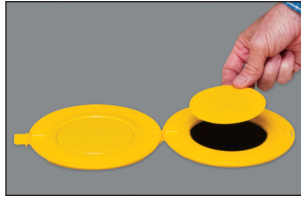
Concrete pour complete.



Note: Contractor added tape onsite. Arlington's EMTCT bushings do not require taping to hold bushings in place.



To use as a bushing for low voltage cable, remove the disk from center of the conduit cap.



CATALOG NUMBER	UPC/DCI/NAED MFG #01 8997	DESCRIPTION	TRADE SIZE	UNIT PKG	STD PKG
EMT200CFT	22620	Conduit Cap/	2"	50	50
EMT300CFT*	22621	Insulating Bushing	3"	25	25
EMT400CFT*	22622	with Flange and Coupler	4"	25	25

*may also be used with 3 and 4 inch Rigid, IMC and PVC rigid conduit



4"
EMT400CFT



Arlington®

1 Stauffer Industrial Park
Scranton, PA 18517
800/233.4717 • Fax 570/562.0646
www.aifittings.com

© 2019 Arlington Industries, Inc.

Made in USA

Distributed by

Patent pending

EMT_CFT 0819/15M