

**NEW!**  
more on  
reverse

# Non-metallic ONE BOX<sup>®</sup> for Ceiling Fixtures

*For New Work or Retrofit • Secure Mounting to Joist*



**F426**  
One Box<sup>™</sup>  
for fixtures

**NEW WORK** Position box and mount to side of joist using the supplied captive screws. Pull cable through installed NM942 cable connector.

**GREAT FOR RETROFIT TOO!**

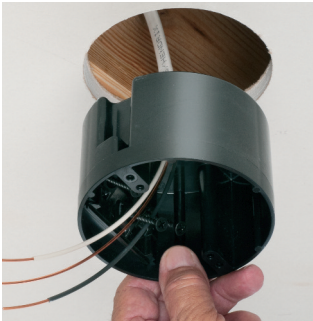


Lines indicate joist

**1** Determine box location. Locate joist. Make opening next to it.



**2** Pull cable...



**3** ...through installed NM942 cable connector. Insert box into opening



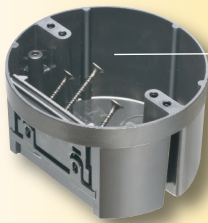
**4** Mount box to side of joist using the supplied captive installation screws.

Arlington's ONE BOX<sup>®</sup> **for ceiling fixtures** is our versatile, non-conductive box for new construction *or retrofit*. It side mounts to a wood or steel joist for an *extra secure* installation.

- F426 One Box for fixtures... easy installation
- Listed for fixtures up to 50 lbs



- 28.0 cubic inch round, non-metallic box
- Captive installation screws; installed NM942 cable connector
- UL/CSA Listed
- **2-Hour Fire Rating**



Captive installation screws

**F426**  
Patent pending



**Rated for Fixtures up to 50 lbs**



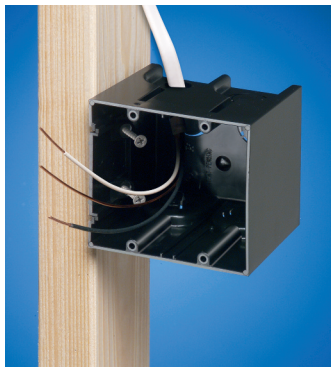
1 Stauffer Industrial Park  
Scranton, PA 18517  
**800/233.4717**  
**Fax 570/562.0646**  
[www.aifittings.com](http://www.aifittings.com)

Catalog Number	UPC/DEI/NAED Mfg. #018997	Description ONE BOX <sup>™</sup>	Cubic Inches	Unit/Std Pkg
<b>F426</b>	06904	Round, non-metallic box for fixtures up to 50 lbs.	28.0	20

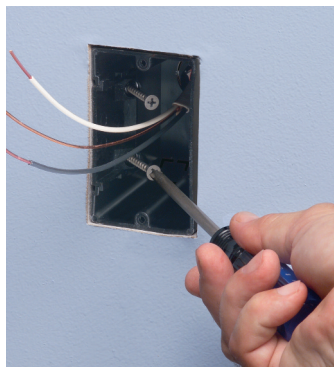
# More ONE BOX<sup>®</sup> ...Non-Metallic and Steel

## Secure Joist-Mount Installation in New Work or Retrofit

### NON-METALLIC ONE BOX for devices for New Construction ...and Retrofit



Box set too far forward or back?  
Back the screws out to reposition it.



Mounts securely to the stud –  
not the drywall

Catalog Number	UPC/DEI/NAED Mfg. #018997	Description Non-Metallic ONE BOX <sup>®</sup>	Cubic Inches	Unit/Std Pkg
<b>F101</b>	43626	Single-gang	22.5	50
<b>F101H</b>	43634	Single-gang, Horizontal	22.5	20
<b>F102</b>	43640	Two-gang, vertical	42.0	25
<b>F103</b>	43641	Three-gang, vertical	61.0	20
<b>F104</b>	43642	Four-gang, vertical	80.0	20
<b>F102D</b>	43544	Voltage Divider	—	25



**F101**  
Single gang



**F101H**  
Single Horizontal

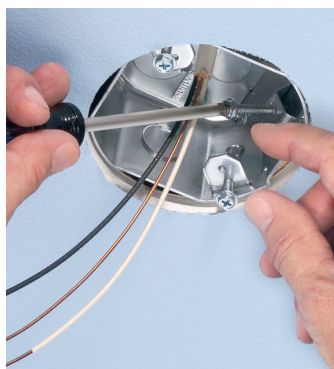


**F102**  
Two-gang



### Fan-Rated STEEL ONE BOX for New Construction

### ...and Retrofit



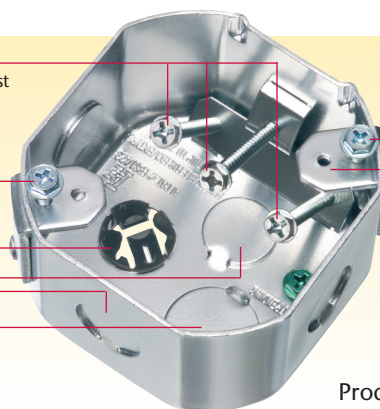
Three screws  
attach box to joist  
ship captive

Tapped #10-32  
for fans (screws  
included)

Installed NM cable  
connector

1/2" KOs

3/4" KO  
inside



Tapped  
#10-32  
for fans  
(screws  
included)

Tapped  
#8-32  
(for  
fixtures)

**FBS1423**  
Product Features

FBS1423 Steel Box includes installed NM cable connector, three (captive) box installation screws and two (captive) #10-32 screws for fan installation.



Catalog Number	UPC/DEI/NAED Mfg. #018997	Cubic Inches	Side-Mount Box Depth	Unit/Std Pkg
<b>FBS1423</b>	76190	23.0	2.375"	10

**Arlington<sup>®</sup>**

1 Stauffer Industrial Park  
Scranton, PA 18517

800/233.4717

Fax 570/562.0646

www.aifittings.com

Patented. Other patents pending  
F426 0116/15M

Distributed by