

IN/OUT BOX[®] for Fans and Fixtures

Made in USA 

NEW!
Outlet boxes
on back

Adjustable Non-Metallic Box for New Construction



Catalog Number	UPC/DEI/NAED Mfg. #018997	Description	Size/Cu Inches	Unit/Std Pkg
FBA426	02575	Adjustable Fan/Fixture Box	Round 21.0 cu in	25/ctn

Includes (4) installation screws, NM cable connector.
Pre-set for 1/2" wall thickness - Depth adjustment up to 1-1/2".
Rated for 70 lb fan; 100 lb fixture.

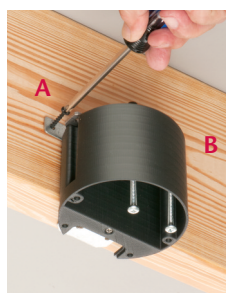
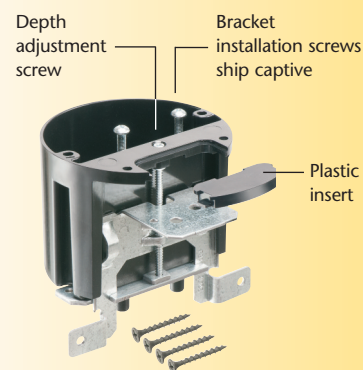
NEW!

FBA426
Fan/Fixture Box
**Easy Installation
in New Construction**

Arlington's IN/OUT BOX *for fans and ceiling fixtures* adjusts up to 1-1/2" to accommodate varying ceiling thicknesses, like single or double drywall.

- Pre-set for 1/2" ceiling...
Depth adjusts up to 1-1/2"
- Always accessible depth adjustment screw allows for depth adjustment of box *after* the ceiling is in place
- Complies with 2014 NEC, 314.20 for set back boxes
- Mounts securely to joist in new construction
- Listed for fans up to 70 lbs; fixtures up to 100 lbs
- UL/CSA Listed
- **2-Hour Fire Rating**

FBA426
Adjustable Fan/Fixture Box



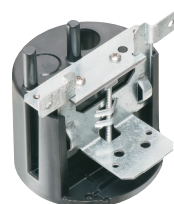
1 Install FBA426 onto joist with (4) screws: (2) through support tabs (A and B), and (2) more through the front flange.



2 Slide plastic insert into box.



3 Pull NM cable through installed NM connector.



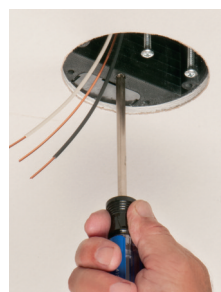
Underside views



**Rated for Fans
up to 70 lbs;
and Fixtures
up to 100 lbs**



4 Cutaway: Box set back in double drywall ceiling. FBA426 adjusts up to 1-1/2" for ceiling thickness.



5 After installation of wall board use the depth adjustment screw to adjust position of box if necessary.



6 Box flush with ceiling. Remove captive installation screws and install bracket.

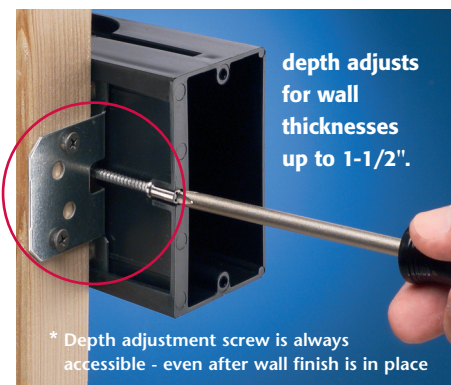
Patent pending
A[®]
UL LISTED **CSA**
Arlington[®]

1 Stauffer Industrial Park
Scranton, PA 18517
800/233.4717
Fax 570/562.0646
www.aifittings.com

IN/OUT BOX[®] Adjustable OUTLET Boxes

Made in USA 

Adjustable Non-Metallic Outlet Boxes for New Construction



Arlington's IN/OUT OUTLET BOXES are adjustable for wall thicknesses up to 1-1/2"; perfect for use when the final thickness is not known; double drywall, change orders, tile, etc.

New! ...single-gang **horizontal** box **FA101H** for back-splash above countertops and horizontal outlets... single-gang, **low profile** **FA101LP**. Made for new work installations with shallower wall cavities, it's shorter than our 'regular' single-gang IN/OUT outlet box – perfect for smaller spaces.

- Complies with 2014 NEC, 314.20 for set back boxes
- Always accessible depth adjustment screw
- Secure installation on wood or steel studs in new construction



Arlington[®]

1 Stauffer Industrial Park
Scranton, PA 18517

800/233.4717

Fax 570/562.0646

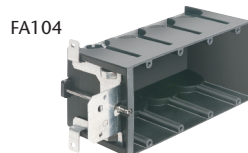
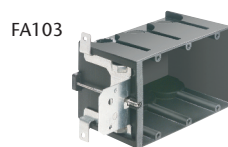
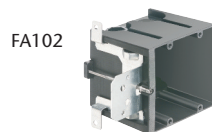
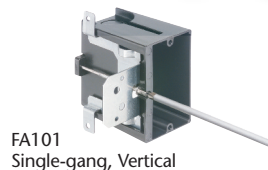
www.aifittings.com



FBA426 0915/25M
Patent pending



*** 2-HOUR FIRE RATING**
on single, two and three gang boxes



Catalog Number	UPC/DEI/NAED Mfg. #018997	Description	Number of Gangs / Cubic Inches	Unit/Std Pkg
FA101*	04241	Non-metallic box for 2x4 studs	Single/Vertical/21.0 cu in	25
FA101H*	11102	w/ depth adjustment up to 1-1/2" (pre-set for 1/2" wall thickness)	Single/Horizontal/21.0 cu in	25
FA102*	04242		Two-gang / 43.5 cu in	10
FA103*	04243		Three-gang / 65.0 cu in	10
FA104	04244		Four-gang / 87.0 cu in	10

with Ground Clip for use in Canada

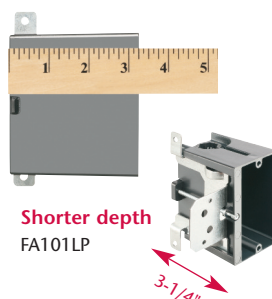
Catalog Number	UPC/DEI/NAED Mfg. #018997	Description	Number of Gangs / Cubic Inches	Unit/Std Pkg
FA101GC*	76881	Non-metallic box w/ depth adjustment up to 1-1/2" (pre-set for 1/2" wall thickness)	Single/Vertical/21.0 cu in	25
FA101HGC*	11103		Single/Horizontal/21.0 cu in	25
FA102GC*	76883		Two-gang / 43.5 cu in	10
FA103GC*	76884		Three-gang / 65.0 cu in	10
FA104GC	76885		Four-gang / 87.0 cu in	10

Catalog Number	UPC/DEI/NAED Mfg. #018997	Description	Unit/Std Pkg
FA102D	04245	Low Voltage Divider for FA102, FA103, FA104	25



FA102D

FA102D low voltage separator for use with multiple gang IN/OUT BOX



Catalog Number	UPC/DEI/NAED Mfg. #018997	Description IN/OUT BOX [®]	Size/ Cu Inches	Unit/Std Pkg
FA101LP	76880	3.25" deep, Non-metallic low profile outlet box	Single-gang 18.3 cu in	25
FA101LP GC	76882	3.25" deep, Non-metallic low profile outlet box, with ground clip for Canada	Single-gang 18.3 cu in	25

w/ depth adjustment up to 1-1/2" (pre-set for 1/2" wall thickness)