

NEW!
more on reverse

5.5" Floor Box for New Concrete

Two Low Voltage Ports, Six Conduit Hubs • Recessed Cover Kits to Fit



NEW!

FLBC5500



5.5" Concrete Floor Box
Six Hubs, Multiple Slots for Low Voltage Dividers

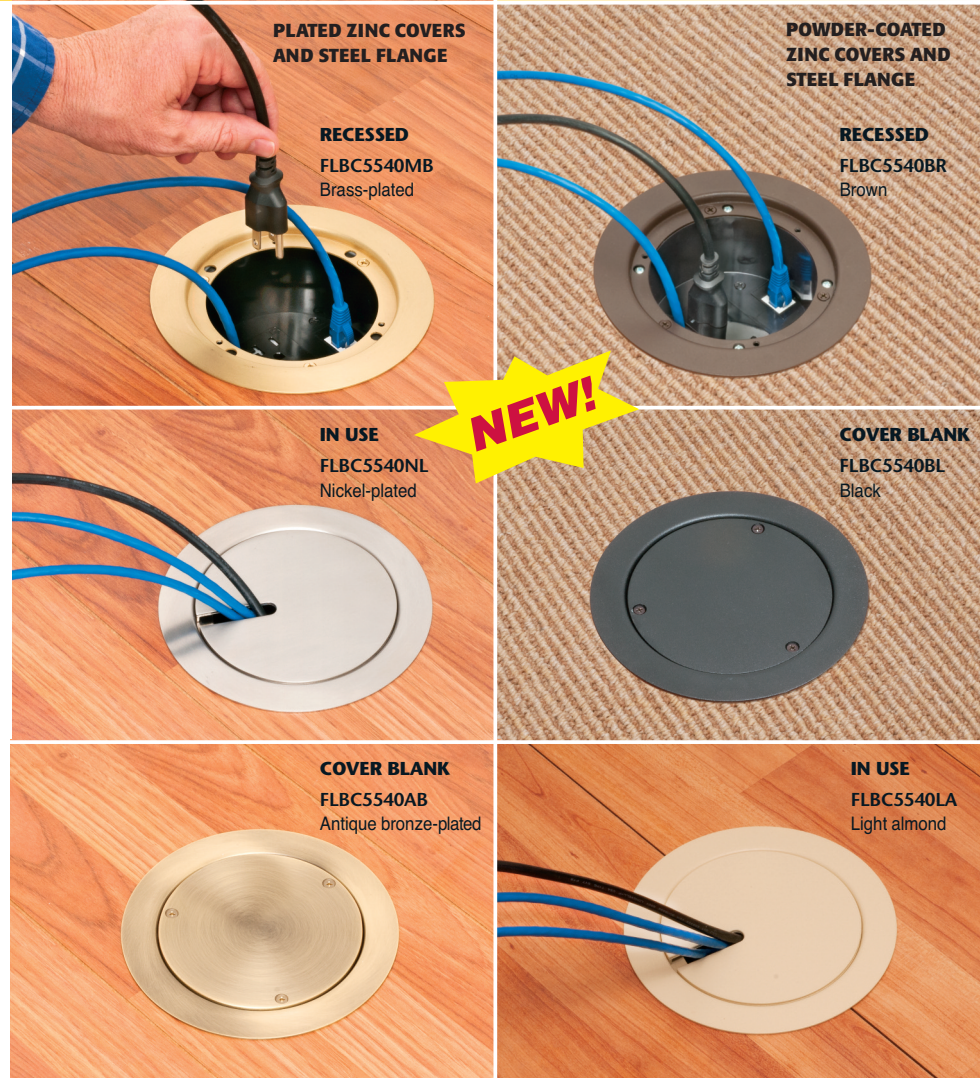
Here's the solution for cost-savings and easy, flush installation of a receptacle and low voltage ports in a new concrete floor... Arlington's **5.5" FLOOR BOX** and **RECESSED COVER KITS**.

Made of heavy-duty plastic, our FLBC5500 5.5" non-metallic **concrete floor box** has six conduit hubs, four plugs and **MULTIPLE** options for positioning the two low voltage dividers in the box.

The FLBC5540 series **recessed cover kits** come with *two* low voltage openings, an ultra-thin stamped steel flange, and flush-to-the-floor in-use and blank covers.

- Ultra thin flange and recessed devices reduce trip hazards caused by protruding plugs
- *Installed* UL Listed 20A tamper-resistant decorator-style receptacle
- **Six Finishes/colors**
Diecast zinc cover, steel flange
PLATED in brass, nickel and antique bronze finishes and POWDER-COATED in black, brown and light almond

FLBC5540 RECESSED COVER KITS for FLBC5500



PLATED ZINC COVERS AND STEEL FLANGE

RECESSED
FLBC5540MB
Brass-plated

POWDER-COATED ZINC COVERS AND STEEL FLANGE

RECESSED
FLBC5540BR
Brown

IN USE
FLBC5540NL
Nickel-plated

NEW!

COVER BLANK
FLBC5540BL
Black

COVER BLANK
FLBC5540AB
Antique bronze-plated

IN USE
FLBC5540LA
Light almond

FLBC5540 Cover Kit components

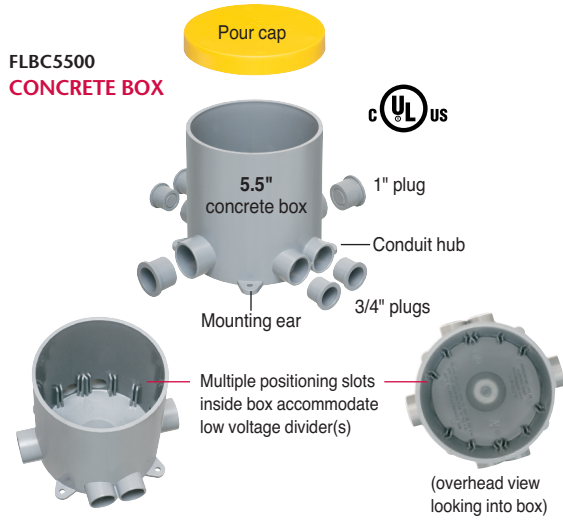


Arlington®

1 Stauffer Industrial Park
Scranton, PA 18517
800/233.4717 • Fax 570/562.0646
www.aifittings.com

FLBC5500 Concrete Floor Box, FLBC5540 Cover Kits

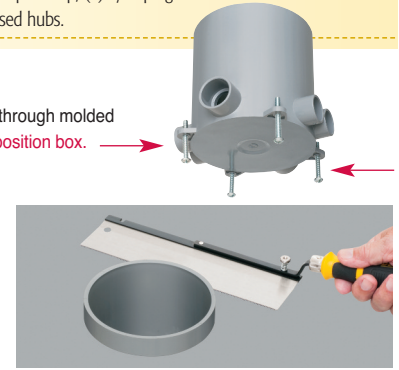
Put a Receptacle, Two Low Voltage Ports in New Concrete!



CATALOG NUMBER	UPC/DCI/NAED MFG. #018997	DESCRIPTION CONCRETE FLOOR BOX FOR NEW CONCRETE	UNIT PKG	STD PKG
FLBC5500	21190	5.5" Non-metallic Round Box with (6) Conduit Hubs cULus Listed. Includes pour cap, (4) 3/4" plugs and (2) 1" plugs for unused hubs.	1	5

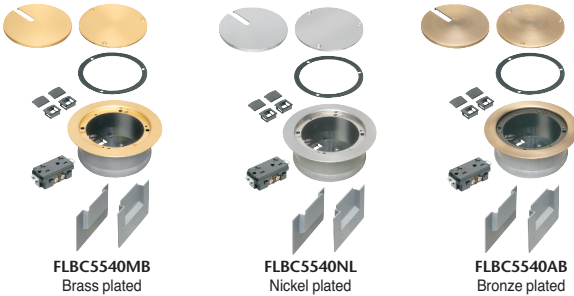
EASY TO INSTALL

- 1 Set concrete floor box into position. Secure in place through molded mounting ears. **Option:** Use 1/4-20 screws to level/position box.
- 2 Install conduit as needed using PVC cement. Pull wires through conduit as required.
- 3 Install plugs (provided) with PVC cement to seal unused openings.
- 4 Install pour cap. Pour concrete to finished depth.
- 5 After concrete has cured, remove pour cap. Use saw to cut box to finished floor height.



RECESSED COVER KITS for 5.5" CONCRETE BOX

with **PLATED COVER and FLANGE**

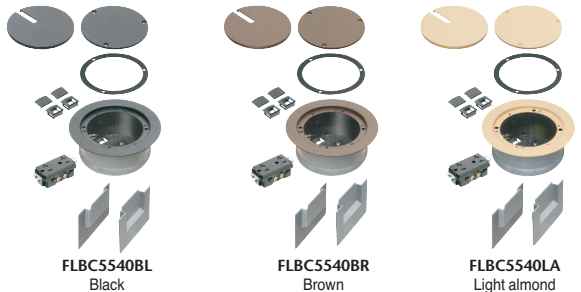


CATALOG NUMBER	UPC/DCI/NAED MFG. #018997	DESCRIPTION FINISH/COLOR	COVER KITS FOR FLBC5500	UNIT/STD PKG
with PLATED DIECAST ZINC BLANK COVER and IN-USE SLOTTED COVER • PLATED STEEL FLANGE				
FLBC5540MB	21163	Brass-plated cover and flange, Black Decorator Style Receptacle		1
FLBC5540NL	21164	Nickel-plated cover and flange, Black Decorator Style Receptacle		1
FLBC5540AB	21165	Antique Bronze-plated cover and flange, Black Decorator Style Receptacle		1

FLBR5540 KITS INCLUDE

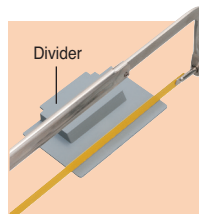
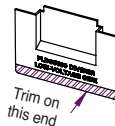
Non-metallic leveling ring assembly with installed UL Listed, tamper resistant 20A decorator-style receptacle, (2) installed low voltage keystone holder inserts, (2) low voltage blank inserts, blank cover w/ gasket, in-use slotted plug cover, (3) #8-32 x 5/8" flat head screws, (2) low voltage dividers

with **POWDER-COATED COVER and FLANGE**



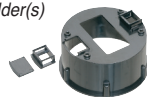
POWDER-COATED DIECAST ZINC BLANK COVER and IN-USE SLOTTED COVER • POWDER-COATED STEEL FLANGE

FLBC5540BL	21160	Black cover and flange, Black Decorator Style Receptacle		1
FLBC5540BR	21161	Brown cover and flange, Black Decorator Style Receptacle		1
FLBC5540LA	21162	Light Almond cover and flange, Black Decorator Style Receptacle		1



If using low voltage divider(s) cut off same amount as you cut off the box.

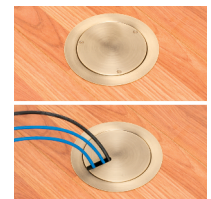
See instructions with product to install blank insert(s) into keystone holder(s)



Wire receptacle and/or low voltage devices. Seal underside of flange with silicone sealant if desired (not included).



After installing flooring secure leveling ring assembly to floor with PVC cement applied around flange.



Cover options: Install gasket and blank with #8-32 x 5/8" screws or install in-use cover (no screws required).

Distributed by

Arlington®

1 Stauffer Industrial Park
Scranton, PA 18517
800/233.4717 • Fax 570/562.0646
www.aifittings.com