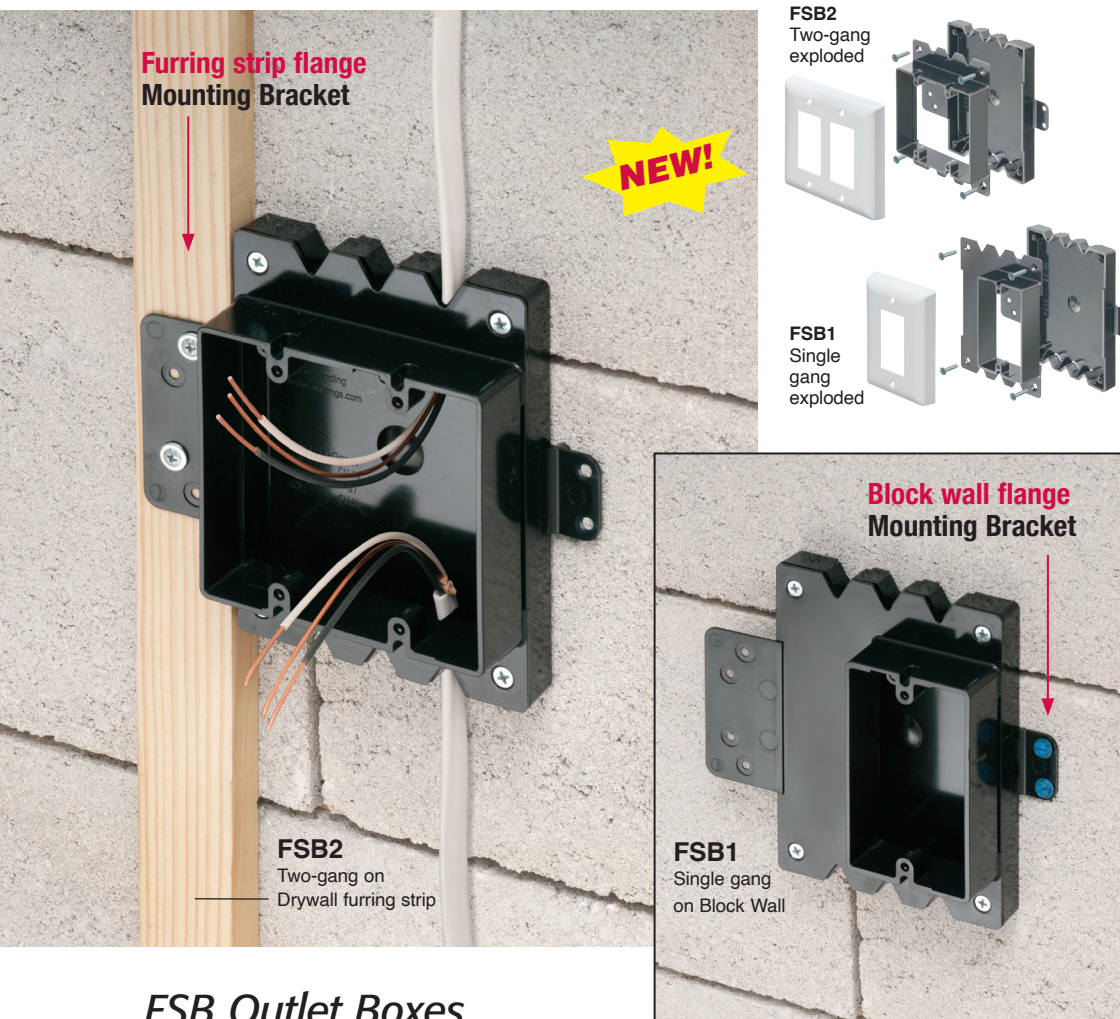


Large Volume Furred Wall Box™

2024 NECA
**Show
Stopper**

NEW!
More on
reverse

Makes Challenging Outlet Installations EASY! • No More Breaking Block



FSB Outlet Boxes

Install ON a Drywall Furring Strip or ON a Block Wall

Arlington's new **Furred Wall Box™** saves time – and makes challenging outlet box installation easy!

Versatile mounting options

Our high strength FSB series outlet boxes are designed for use with existing 1x2 drywall furring strips – but can also be mounted on a concrete block wall between furring strips so installers can place the box/outlet where needed.

Saves time -

Eliminates installation steps

There's NO NEED to break out concrete block. NO NEED to install separate furring strips. And NO NEED to seal the block wall breakout and box.

- Integral cable securement and retention – No pullout!
 - Accommodates GFCI and USB receptacles
 - Fast, easy installation
 - Largest box volume in the industry
Single gang: 21.3 in³
Two-gang: 29.5 in³
 - High strength. Won't break in cold weather. Withstands freeze/thaw.
 - Single and two-gang large pancake style box and cover in convenient kits to simplify the ordering process.
- Covers also sold separately.



Patent
pending



Arlington®

1 Stauffer Industrial Park
Scranton, PA 18517

800/233.4717 • Fax 570/562.0646

www.aifittings.com

**Eliminates
installation
steps
Saves time**

SAVE!
15 MINUTES
and **\$15.00¹**
per BOX

NO MORE breaking
out CMU walls for Outlet Box

NO MORE installing new
furring strip, sealing an opening



¹ Based on \$60/hour fully burdened labor rate

Furred Wall Box™ FSB series



Largest Volume Box in Industry • Put Outlets Where Needed, FAST!

Conventional 'OLD STYLE' Installation Steps

1
Break out CMU block where possible to fit box. Grinder cut. Drill, chisel/hammer to create opening.



8
MINUTES



2
Install furring strip. Mount box.



7
MINUTES



3
Install cable and pigtail wiring as applicable.



5
MINUTES



4
Add foam to insulate and seal the opening.



5
MINUTES



5
Install device. Install finish trim plate.



5
MINUTES

FURRED WALL BOX Fewer Steps • Easy Installation

1 a
Install box on existing drywall furring strip for approximate placement



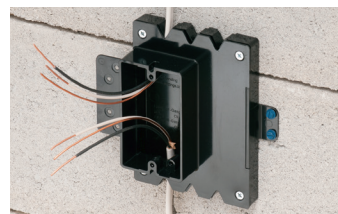
OR
1 b
Install box on block wall for exact placement



5
MINUTES



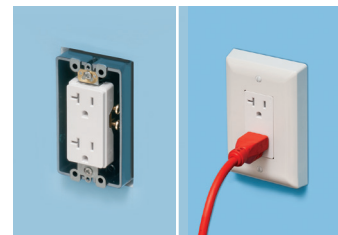
2
Install cable and pigtail wiring as applicable.



5
MINUTES



4
Install device. Install finish trim plate.

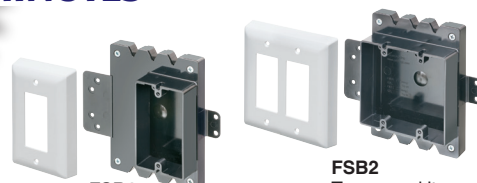


5
MINUTES

ELIMINATES...

- **BREAKING OUT BLOCK**
- **FOAMING AROUND HOLE**

30 MINUTES
VS 15 MINUTES



FSB1
Single gang kit, assembled
(two screws included)

FSB2
Two-gang kit, assembled
(four screws included)

Distributed by

Arlington®

1 Stauffer Industrial Park
Scranton, PA 18517

800/233.4717 • Fax 570/562.0646

www.aifittings.com

Catalog Number	UPC/DEI/NAED Mfg. #018997	Description	Volume (In ³)	Unit/Std Pkg
FSB1	99321	Single gang box & cover	21.3	1/10
FSB2	99322	Two-gang box & cover	29.5	1/10
FSB1C	99323	Single gang cover	—	1/10
FSB2C	99324	Two-gang cover	—	1/10

Single gang kit and cover includes (2) white painted screws.
Two-gang kit and cover includes (4) white painted screws.

Patent pending

FSB 0424/25M