

NEW!

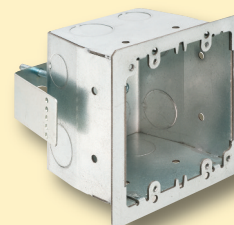
# 4x4 Steel Box for Concrete Block

*Lowest Cost, Easy-to-Install Box for Electrical Rough-in*



Arlington's 4X4 FSCB44 box and single-gang FSCB24 box offer the simple way to install a steel electrical box inside a concrete block wall.

***They're the LOWEST INSTALLED COST concrete block boxes in the industry!***



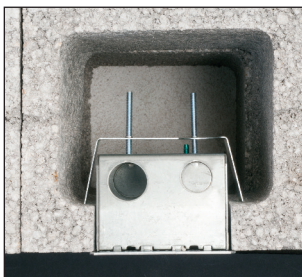
**FSCB44**  
4x4 box  
Patent pending

- 1/2" and 3/4" knockouts
- Screw hole patterns for devices:  
**4x4 and two-gang in the 4x4 box;**  
and devices for the single-gang box
- Spring clip holds box securely against block when screws are tightened

## Easy Installation



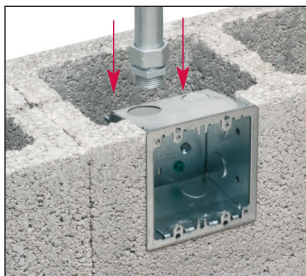
Opening in block.



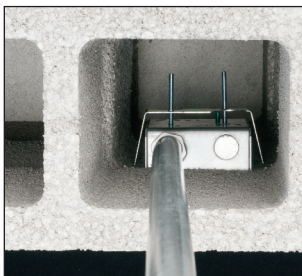
Insert the box in the opening in the block. (Top view shown)



Tighten the screws on the spring clip to pull it securely against the block.



Install the EMT in the top of the box.



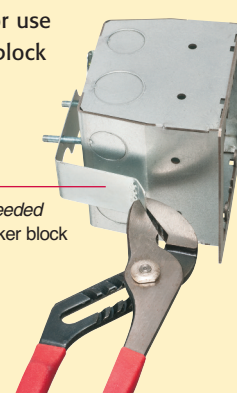
Top view: EMT installed in box



Continue adding block.

For added convenience, bracket ends break off for use on thicker block walls.

Scored bracket ends break off as needed for use on thicker block



# A<sup>®</sup>

c UL US

## Arlington<sup>®</sup>

1 Stauffer Industrial Park  
Scranton, PA 18517  
**800/233.4717**  
**Fax 570/562.0646**  
**www.aifittings.com**

Catalog Number	UPC/DEI/NAED Mfg. #018997	Description	Unit/Std Pkg
<b>FSCB44</b>	11236	Steel, 4x4	20
<b>FSCB24</b>	11237	Steel, Single-gang	25



**FSCB24**  
Single-gang