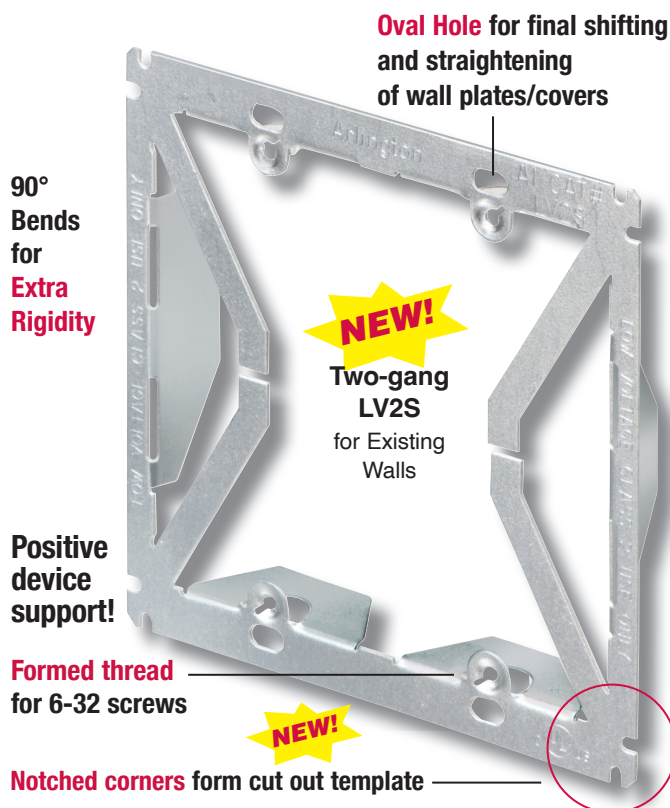


Plated STEEL Cut-in Mounting Brackets

Installs Low Voltage Class 2 wiring **WITHOUT AN ELECTRICAL BOX**



Arlington's Low Voltage Mounting Brackets are *the solution* for fast and easy cut-in installation and mounting of Class 2 communications, computer and cable TV wiring and connections.

Our single gang and **new two-gang LV2S plated steel cut-in** mounting brackets, with unique X-shaped bracket design, provide excellent stability and secure installation of low voltage devices and cable, in an existing wall – *without an electrical box.*

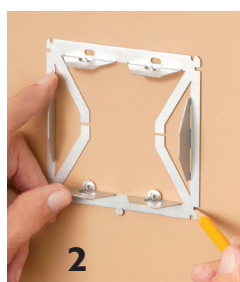
And, they're easy to install with a drywall saw and a screwdriver!

Unique, secure four-corner support on 1/4" to 1-1/4" walls

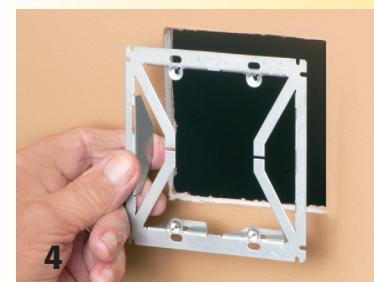
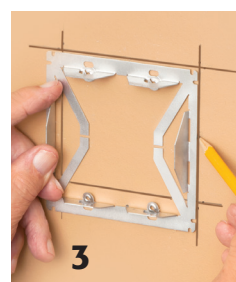
- Provides positive low voltage device support on formed thread for #6-32 screws
- One or two-gang bracket is template for cut out – **new notch design** makes it easier than ever to create the cutting guideline



1 Bracket is template for the opening. Place bracket facedown on surface. Level.



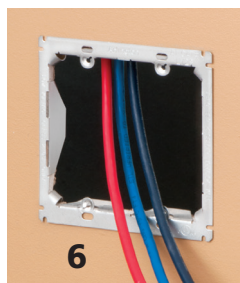
2 Make a pencil 'dot' in eight notches in corners.



4 Cut opening. Insert bracket into opening.



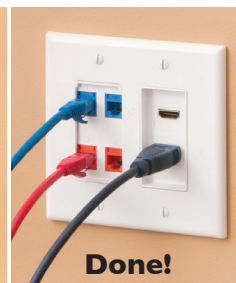
5 Bend all four corner supports into hole and around drywall to set bracket securely in opening.



6 Pull wires.



7 Install device through screw holes in bracket.



Patent pending



Arlington®

1 Stauffer Industrial Park
Scranton, PA 18517
800/233.4717 • Fax 570/562.0646
www.aifittings.com

Catalog Number	UPC/DEI/NAED Mfg. #018997	Low Voltage Plated Steel Mounting Bracket	Adjusts to Fit Wall Thickness	Unit/Std Pkg
LV1S	99325	Single-gang	1/4" to 1-1/4"	100
NEW! LV2S	99366	Two-gang	1/4" to 1-1/4"	50

LV1S for Existing Walls



Heavy-Duty ZINC Cut-in Mounting Bracket

For Low Voltage Class 2 wiring in **COMMERCIAL CONSTRUCTION**

Designed to mount wall plates flush, our mounting brackets have features that deliver a better-looking, easy to install job – specially designed screw holes, a thin front lip and more.

For *existing* construction our **new ZINC cut-in mounting brackets**, offer extra rigidity so they won't bend as easily as plastic. Plus, they have threaded holes for easy, fast device installation – and **LABOR SAVINGS**.

- Bracket adjusts to fit wall board from 1/4" to 1" thick



One or two-gang bracket is the template for cut out. Level. With the **new design** it's **easier than ever!** Make a pencil dot in the notches in each corner. Draw a line

to connect the dots. Cut the opening along the line.

- cULus Listed

**Better-looking,
Faster Installation!**

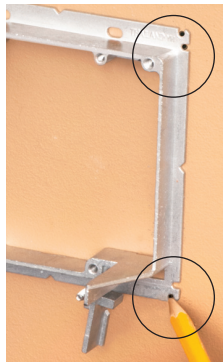
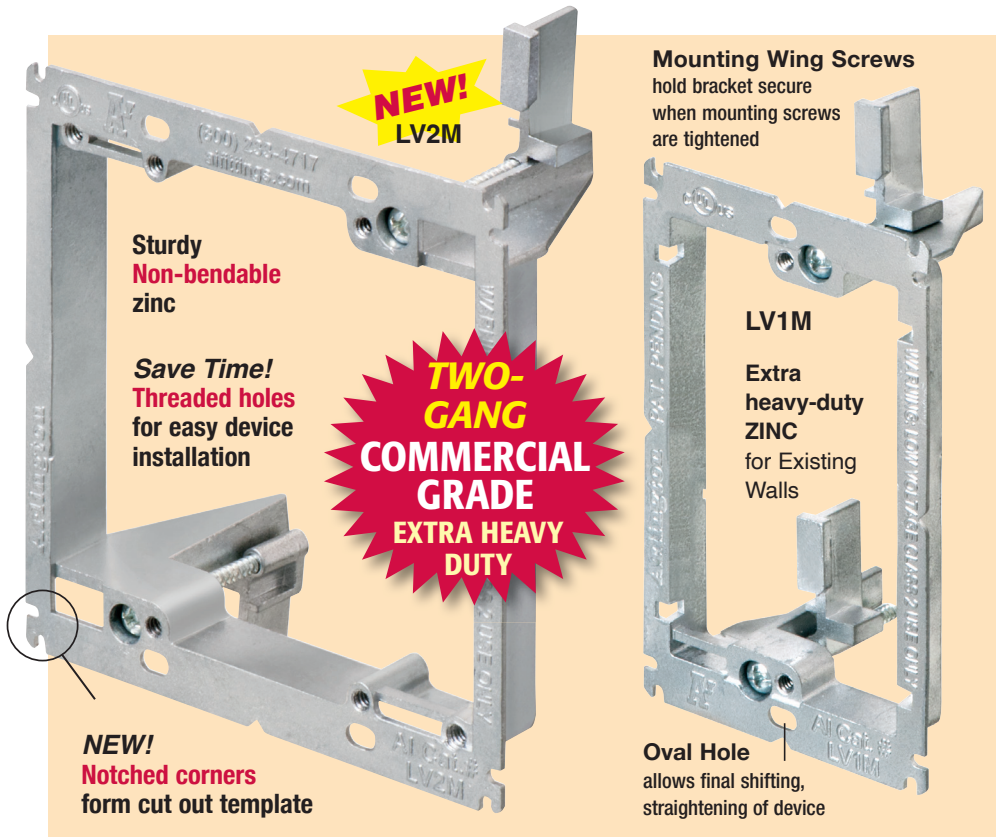
Arlington also manufactures a variety of single-, two-, three- and four-gang **NON-METALLIC** low voltage brackets for new and old work, and others for specialty applications.

Patent pending



Arlington®

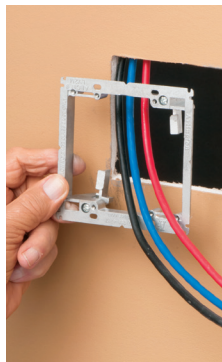
1 Stauffer Industrial Park
Scranton, PA 18517
800/233.4717 • Fax 570/562.0646
www.aifittings.com



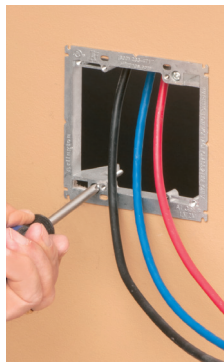
1 Level bracket.
Place bracket facedown on surface. Make a pencil 'dot' in all eight notches in the corners.



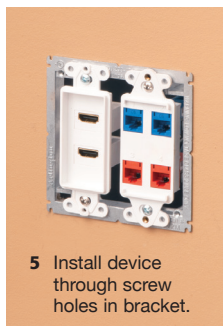
2 Use bracket as a straight edge to draw cutting guideline between pencil marks. Cut opening.



3 Pull wires. Insert bracket into opening.



4 Tighten screws to set bracket wings securely against drywall.



5 Install device through screw holes in bracket.



Done!

Extra Heavy-duty Zinc Low Voltage Mounting Bracket
Adjusts to fit 1/4" to 1" Wall Thicknesses

Catalog Number	UPC/DEI/NAED Mfg. #018997	Description	Unit Pkg	Std Pkg
LV1M	12905	Single-gang	10	100
LV2M	99365	Two-gang	5	50

Distributed by