

ROOF TOPPER® Rooftop Supports

Made in USA 

more on
reverse

Raises Conduit, Raceway Off the Roof Surface



Roof Topper® supports raise conduit or raceway 4" or more off the roof surface to meet the requirements of the 2017 NEC for temperature adjustment for circular conduit.

Made of UV-rated, 100% recycled material, the heavy-duty base sits on the roof deck without the need to attach it to the roof surface with mechanical fasteners.

Roof Topper supports stand up to extreme roof conditions, protecting and elevating your conduit or raceway above the roof deck.

Roof Topper is available in a variety of sizes and configurations. They ship assembled with strut and/or threaded rod installed on the base. On our "E" series supports, the strut is attached with end clamps, reducing cost without any loss of strength. *See reverse for complete information.*

Newest in the line are three styles, 5-5/8" high with a SLED on the base that slides on the roof surface, protecting it from damage caused by expansion and contraction. *Sleds also sold separately.*

- UV resistant for long outdoor life
- Supports up to 2,000 lbs

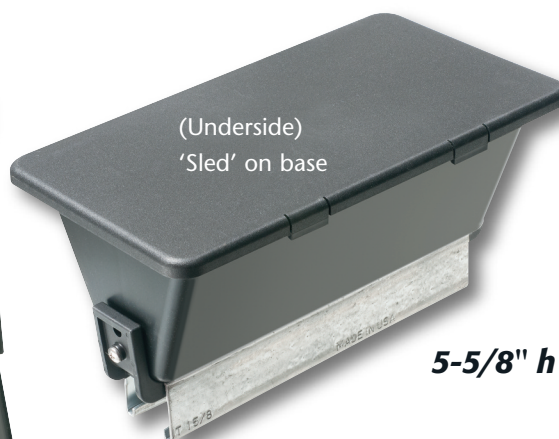
Roof Topper...for sturdy, efficient, reliable support of rooftop conduit!

Patented



Arlington®

1 Stauffer Industrial Park
Scranton, PA 18517
800/233.4717 • Fax 570/562.0646
www.aifittings.com



SLED snaps onto open base to allow for expansion and contraction without damaging the roof surface



Heavy-duty bases and sleds are made of UV-rated 100% recycled material.

ROOF TOPPER® Rooftop Supports

Made in USA 

100% Recycled Material • Stands Up to Extreme Conditions

BASE WITH SLED

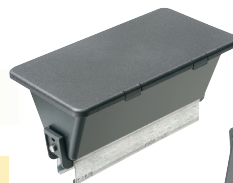
CATALOG NUMBER	UPC/DCI/NAED MFG. #018997	DESCRIPTION ROOF TOPPER SUPPORT	UNIT PKG	STD PKG
STRUT ATTACHED w END CLAMPS (straps not included)				
RTSE405L	52312	Base with sled 5" w x 5-5/8" h	10	10
RTSE409L	52313	Base with sled 9" w x 5-5/8" h	10	10
STRUT INSTALLED w NUTS & BOLTS (straps not included)				
RTS409L	52311	Base with sled 9" w x 5-5/8" h	10	10

SLED ONLY • FITS OPEN BASES

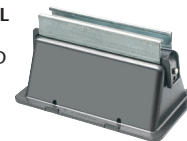
CATALOG NUMBER	UPC/DCI/NAED MFG. #018997	DESCRIPTION SLED FITS (OPEN) BASES	UNIT PKG	STD PKG
RTSL405	38010	4" x 5"	10	10
RTSL409	38011	4" x 9"	10	10



Sled on Base



RTSE405L
5" w
with SLED



RTSE409L
9" w
with SLED



RTS409L
9" w
with SLED



Bases and sleds made of UV-rated
100% recycled material.

OPEN BASE

CATALOG NUMBER	UPC/DCI/NAED MFG. #018997	DESCRIPTION ROOF TOPPER SUPPORT	UNIT/STD PKG
BASE ONLY			
RTSB405	00910	Open Base only 5" w x 4" h	10
RTSB409	00911	Open Base only 9" w x 4" h	10
RTSB1209	00912	Open Base only 9" w x 10-3/8" h	5



RTSB405
5" w x 4" h

Open Base Styles



RTSB409
9" w x 4" h



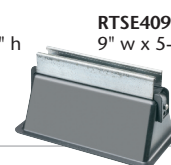
RTSB1209
9" w x 10-3/8" h

STRUT ATTACHED w END CLAMPS (straps not included)

RTSE405	00913	Open Base with strut 5" w x 5-5/8" h	10
RTSE409	00914	Open Base with strut 9" w x 5-5/8" h	10
RTSE1209	00915	Open Base with strut 9" w x 12" h	5



RTSE405
5" w x 5-5/8" h



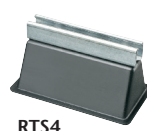
RTSE409
9" w x 5-5/8" h



RTSE1209
9" w x 12" h

STRUT INSTALLED w NUTS, BOLTS (straps not included)

RTS4	10492	Open Base w/ strut 9" w x 5-5/8" h	10
RTS12	10490	Open Base w/ strut, threaded rod 9" w x 12" h	5
RTS421	10493	Open Base w/ strut 21" w x 5-5/8" h	5
RTS1221	10491	Open Base w/ strut, threaded rod 21" w x 12" h	5



RTS4
9" w x 5-5/8" h



RTS421
21" w x 5-5/8" h

TWO FEET, STRUT INSTALLED w NUTS, BOLTS (straps not included)

RTS402	00916	9" w x 4-7/8" h *rated for 1000 lbs	10
--------	-------	-------------------------------------	----



RTS402
9" w x 4-7/8" h

RTS12
9" w x 12" h



RTS1221
21" w x 12" h

RTS4 and RTS421 include installed strut.

RTS12 and RTS1221 include strut and threaded rod (fully assembled, ready to use).



Arlington®

1 Stauffer Industrial Park
Scranton, PA 18517

800/233.4717 • Fax 570/562.0646

www.aifittings.com

Distributed by