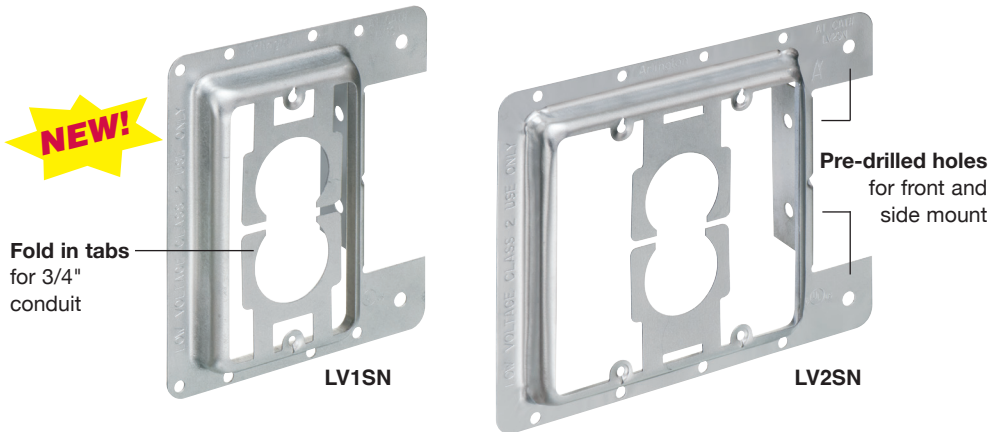


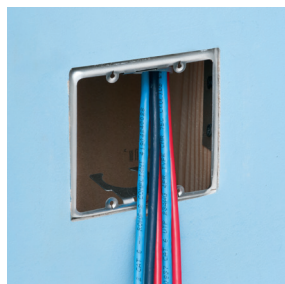
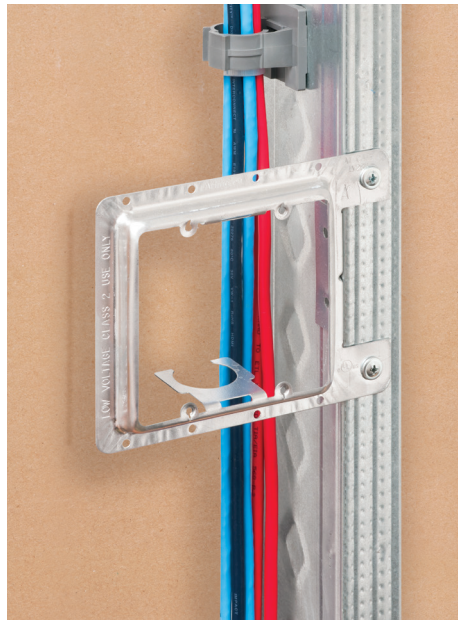
# Steel Mounting Bracket

For Low Voltage Class 2 wiring in **NEW CONSTRUCTION**

**NEW!**  
More on reverse



## 'New Work' Brackets attach to Wood or Metal Studs with Screws or Nails



Attach to wood stud with nails – or to a metal stud with self-tapping screws.

Finished new work installation

Arlington's Low Voltage Mounting Brackets are *the solution* for fast, easy installation and mounting of Class 2 communications, computer and cable TV wiring and connections.

Our new single and two-gang **metal** mounting brackets **for NEW WORK** reduce bulges in drywall caused by plaster rings.

- Brackets mount to the front *or side* of metal or wood studs with self-tapping screws or nails
- Fold in tabs for 3/4" conduit
- Side-mounting delivers an extra rigid installation
- cULus Listed

See reverse for our single and two-gang plated steel low voltage mounting brackets for existing walls.



**Arlington®**

1 Stauffer Industrial Park  
Scranton, PA 18517  
800/233.4717 • Fax 570/562.0646  
www.aifittings.com



Catalog Number	UPC/DEI/NAED Mfg. #018997	Low Voltage Metal Mounting Bracket	Nail-on / Screw-on installation	Unit/Std Pkg
LV1SN	99382	Single-gang	New work	25
LV2SN	99383	Two-gang	New work	25

# STEEL Cut-in Mounting Brackets for Existing Walls

Installs Low Voltage Class 2 wiring **WITHOUT AN ELECTRICAL BOX**

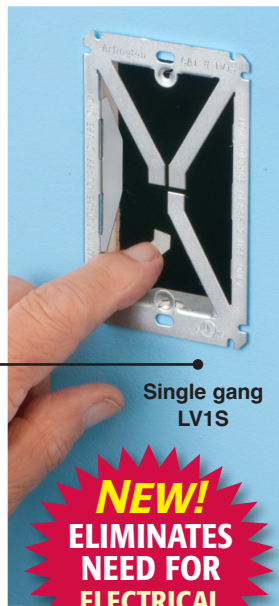
## For Installation in Existing Walls

Our single gang and new two-gang **plated steel cut-in** mounting brackets, with unique X-shaped bracket design, provide excellent stability and secure installation of low voltage devices and cable, in an existing wall – *without an electrical box.*

And, they're easy to install with a drywall saw and a screwdriver!

**Unique, secure four-corner support on 1/4" to 1-1/4" walls**

- Provides positive low voltage device support on formed thread for #6-32 screws
- One or two-gang bracket is template for cut out – the **new notch design** makes it easier than ever to create the cutting guideline
- cULus Listed



Single gang LV1S

**NEW!**  
ELIMINATES  
NEED FOR  
ELECTRICAL  
BOX

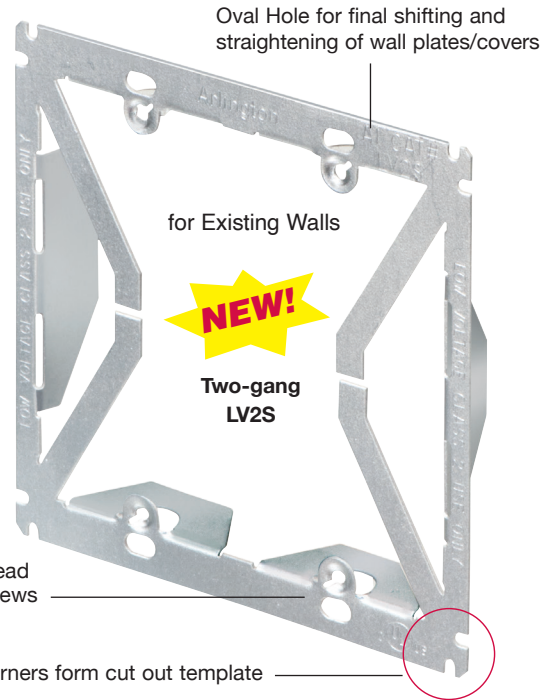
90° Bends for **Extra Rigidity**

Positive device support!

Formed thread for 6-32 screws

**NEW!**

Notched corners form cut out template



Oval Hole for final shifting and straightening of wall plates/covers

for Existing Walls

**NEW!**

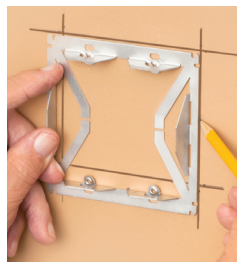
Two-gang LV2S



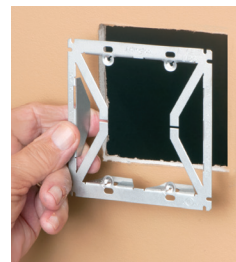
1 Bracket is template for the opening. Place bracket facedown on surface. Level.



2 Make a pencil 'dot' in eight notches in corners.



3 Use bracket as a straight edge to draw cutting guideline between pencil marks.



4 Cut opening. Insert bracket.

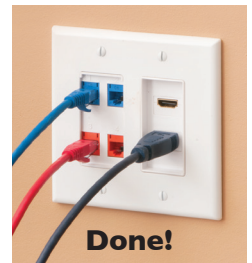
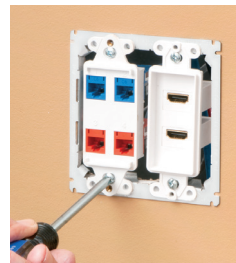


5 Bend all four corner supports into hole and around drywall to set bracket securely in opening.

Patent pending



LV1S for Existing Walls



**Arlington®**

1 Stauffer Industrial Park  
Scranton, PA 18517  
800/233.4717 • Fax 570/562.0646  
www.aifittings.com

Catalog Number	UPC/DEI/NAED Mfg. #018997	Low Voltage Plated Steel Mounting Bracket	Adjusts to Fit Wall Thickness	Unit/Std Pkg
LV1S	99325	Single-gang	1/4" to 1-1/4"	100
<b>NEW!</b> LV2S	99366	Two-gang	1/4" to 1-1/4"	50



Distributed by

LV1SN/LV2SN\_LV1S/LV2S 0825 /25M